



External Enclosure User Manual

COBRA



✧ Include

Hardware Installation Guide

HDD Formatting Guide

Software Installation Guide



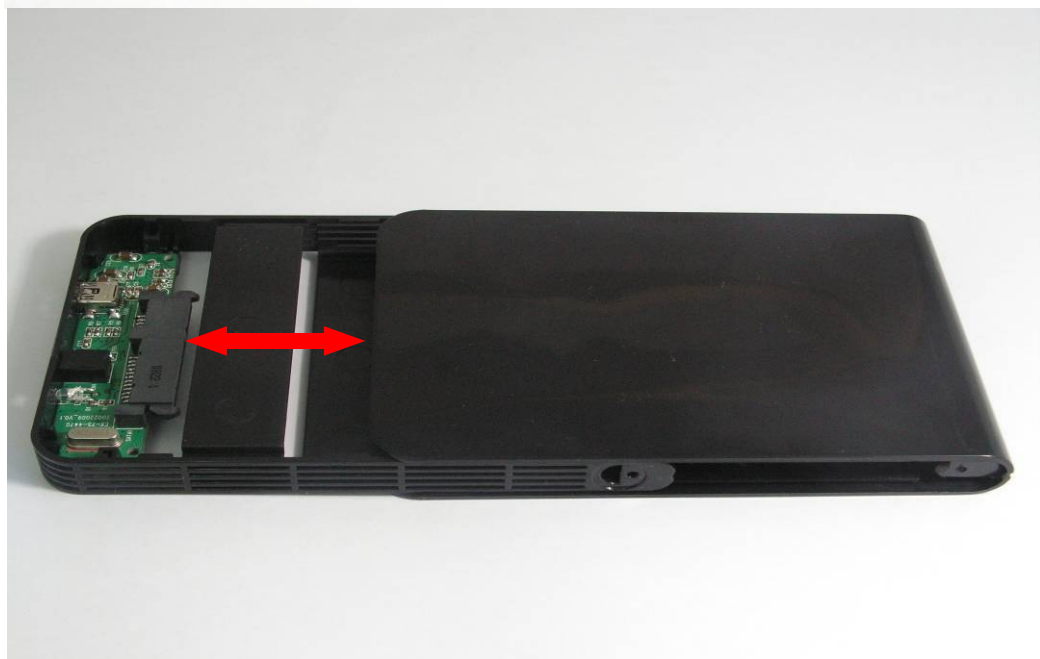
ATTENTION

New HDD Must Be
Formatted Before Use

Hardware Installation Guide

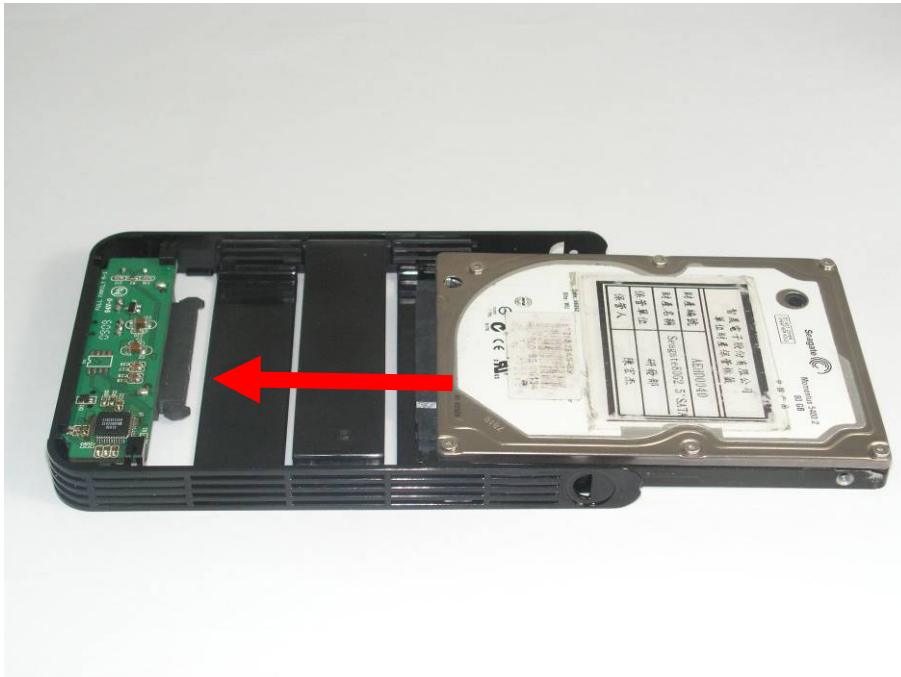
☆ Please follow the instructions and make sure your hard drive is successfully installed to the external enclosure!

STEP1: Use Screwdriver or Pen to push the tenon and pull out the tray.



External enclosure Installation Manual

STEP2: Push the HDD to connect the SATA connector.



Note 1: Make sure the connector is connected properly.

Note 2: Please take mylar off from both sides.

STEP3: Push the tray back to the enclosure. Screw the tray and enclosure together tightly.



Note: you can choose to fix the screws or not.

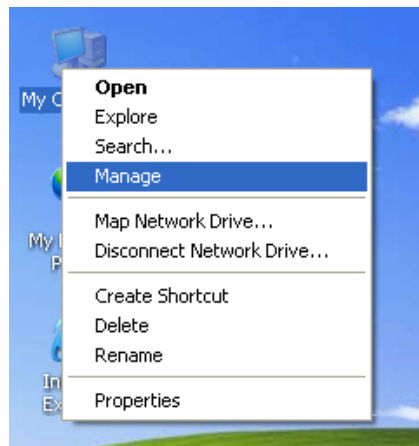
External enclosure Installation Manual

STEP4: Connect the enclosure to PC or notebook via USB cable.

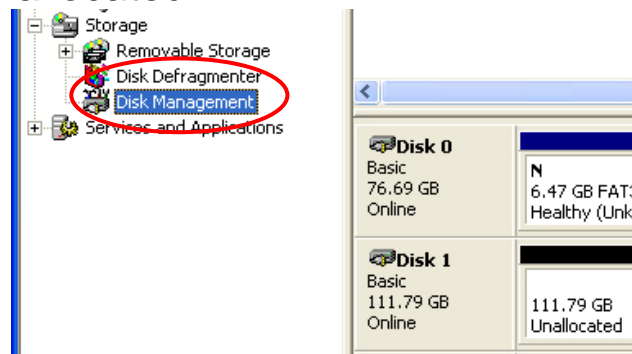
HDD Formatting Guide

- ☆ You may format your external HDD through USB connection.
- ☆ Please make sure your external HDD is turned on and well connected to the PC before formatting the HDD.

STEP1: Right -click “My Computer” icon and select the” Manage” column.

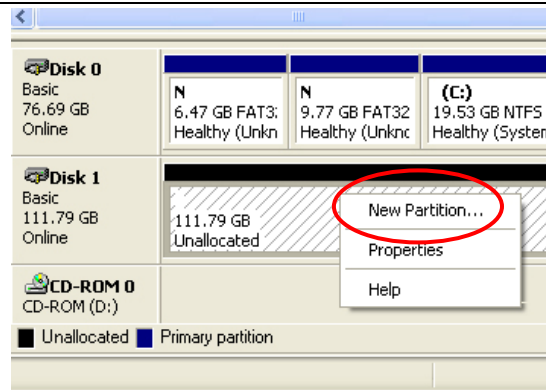


STEP2: Select “Disk Management” and you will see your External HDD showed “Unallocated”.

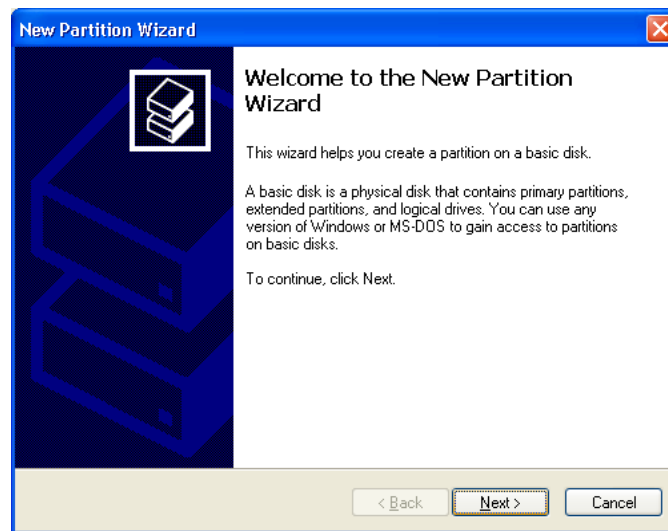


STEP3: Right-click on the “Unallocated” block and select “New Partition”.

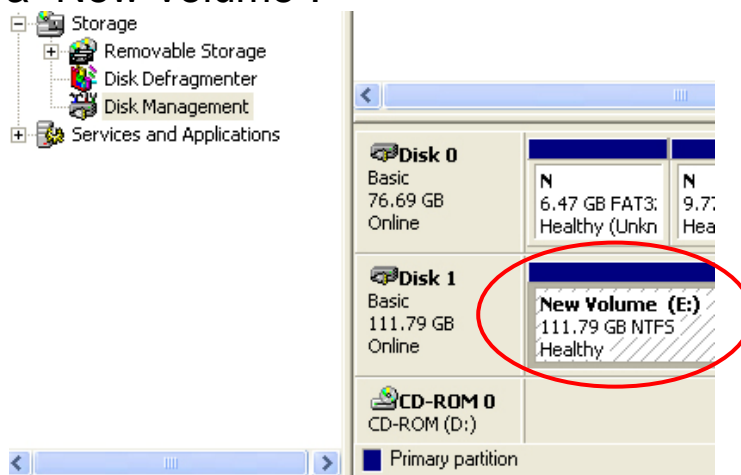
External enclosure Installation Manual



STEP4: The “New Partition Wizard” will appear. Please follow the instruction of the wizard and complete the partition.



STEP5: When new partition is completed, the external HDD will be recognized as a “New Volume”.



External enclosure Installation Manual

STEP6: Double-click “My Computer”. You will see the new volume appears on your PC.

