

# POWERLINK

## Outdoor Plus II 300Mbps High Power USB Adapter Quick Installation Guide

**Part#: PL-2812-300N**

### 1.1 Instructions:

The wifi adapter supports 802.11n protocol, the rate can be up to an unbelievable 300Mbps. And it is downward compatible with 54Mbps, 11Mbps products which support 802.11b/g. Under any mode of network, your wireless connection is protected and your data is secured.

It also can be installed on digital TV and HD Media Player.

### 1.2 Features:

- Compatible with Multi-Media Digital TV, HD Media Player.
- Support 2.4GHz wireless LAN, 802.11b/g/n protocol
- Support USB2.0
- Support 128 bit WEP, TKIP&AES
- Support Windows98/ME/2000/XP/Vista/Win7/8/Linux/Mac
- Fast Install and Configuration
- Support WPS

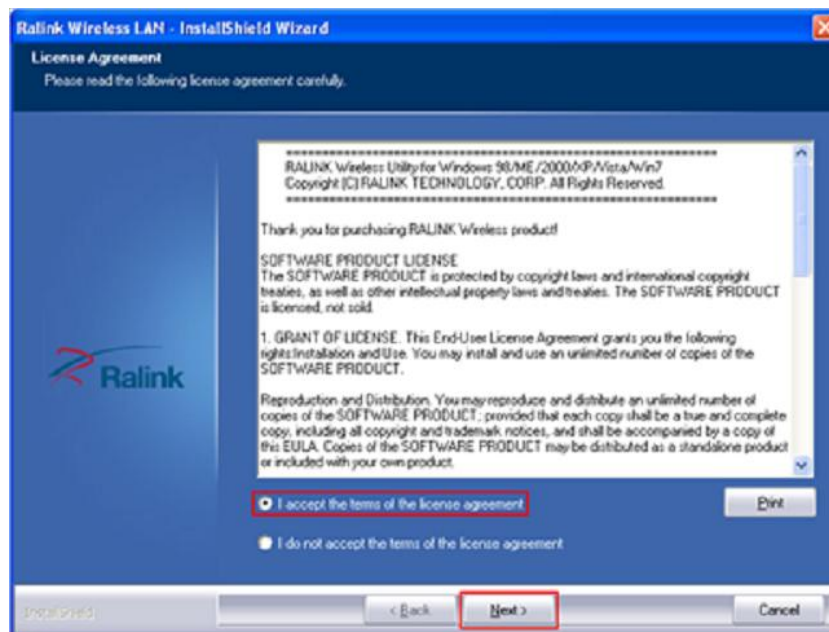
## 2. Installation of Driver

### 2.1 Put drive CD into the CD-ROM, click "Install"

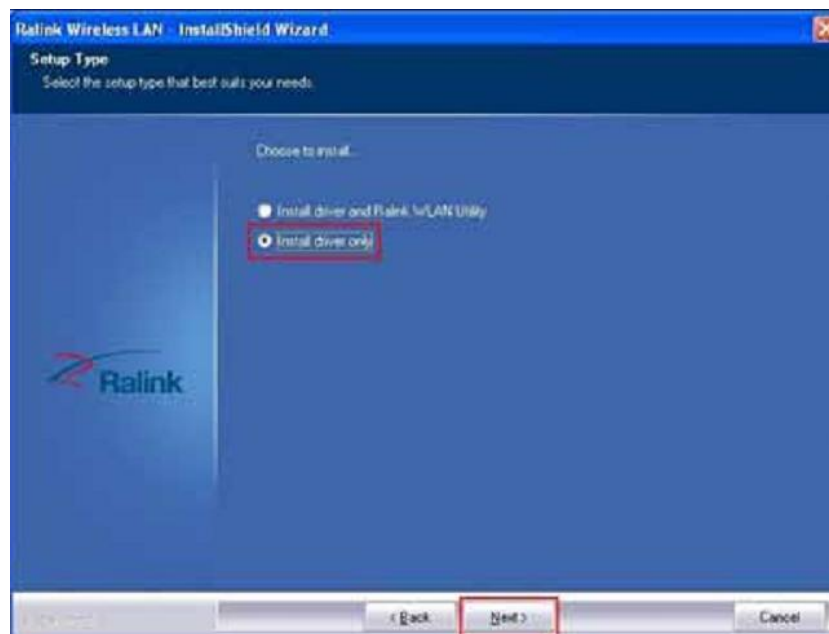


### 2.2 Click "I accept the terms of the license agreement", and click "next"

# POWERLINK



2.3 There are 2 Options, “Install driver and Ralink WLAN Utility”, “Install driver only”. Advanced user may choose the previous one. For example, if you want to use AP function, you need to install Ralink wireless network setting program. If not, you can merely click installing the driver, the WINDOWS Program will help you have access to the internet.

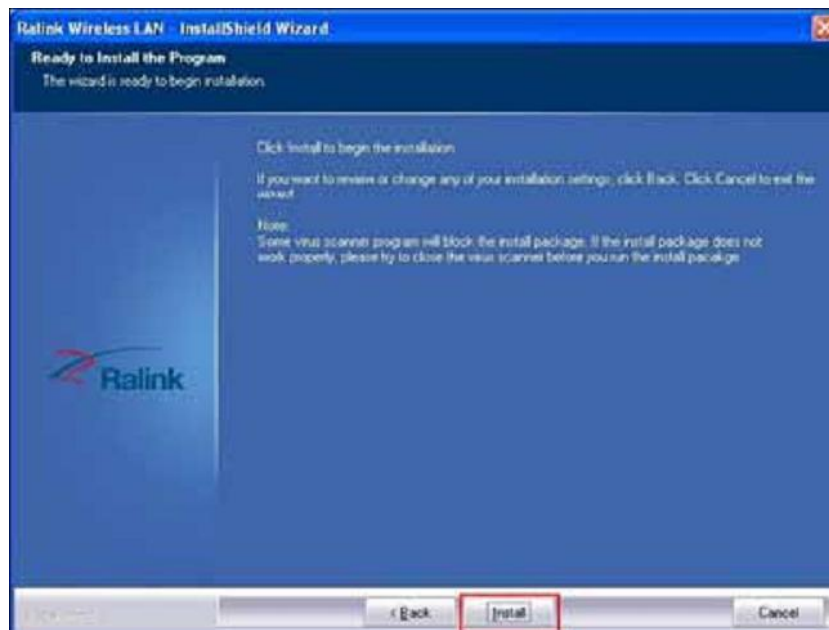


2.4 Click “Install”

# POWERLINK

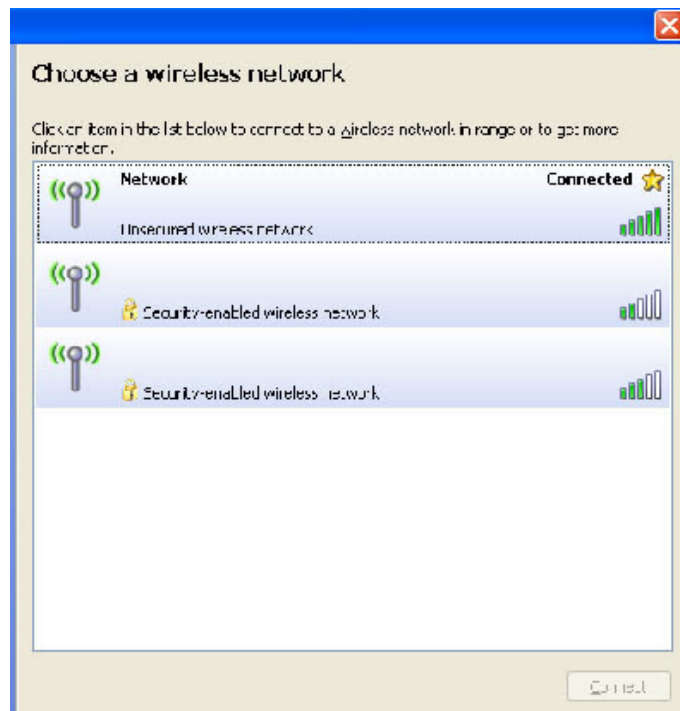


2.5 Click “Accomplished”



2.6 You will find wireless network has been connected successfully.

# POWERLINK



Thank you for purchasing a quality PowerLink Product.

## POWERLINK

Powered by Premiartek

[www.premiartek.com](http://www.premiartek.com)

For questions, please contact Premiartek email: [tech-support@premiartek.com](mailto:tech-support@premiartek.com)