



# PANTHER

## User Manual



✦ Includes

Hard Drive Installation Guide

Hard Drive Formatting Guide

**!** **ATTENTION**  
New HDD Must Be  
Formatted Before Use

# External Enclosure Installation Manual

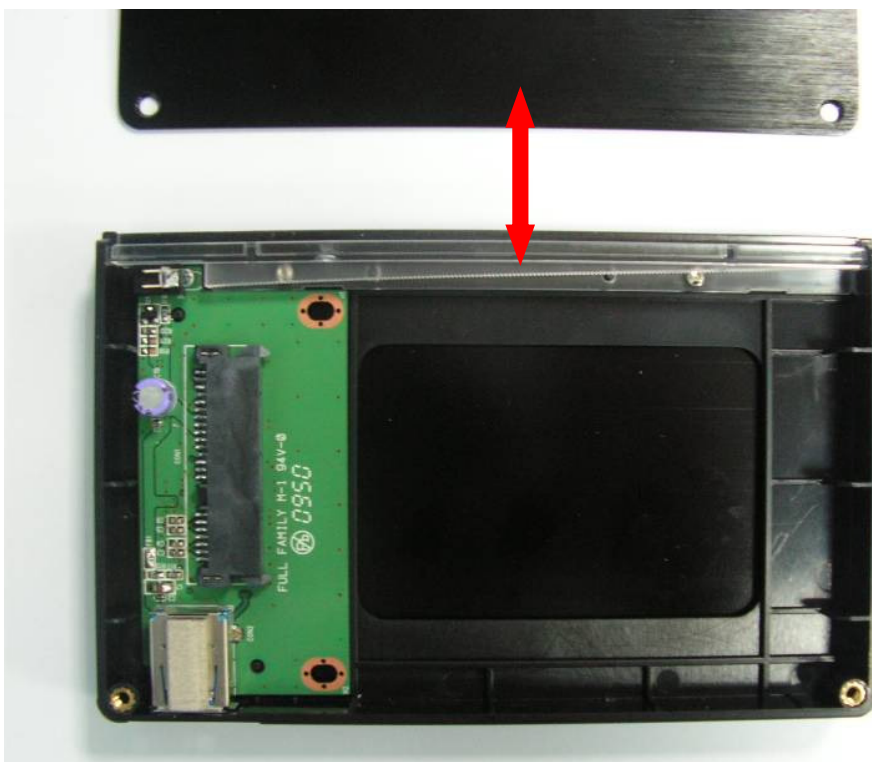
## Hard Drive Installation Guide

Note: Please follow the step by step instructions to make sure your Hard Drive is successfully installed into the External Enclosure.

**STEP 1:** Please unscrew the two screws on the Enclosure cover.

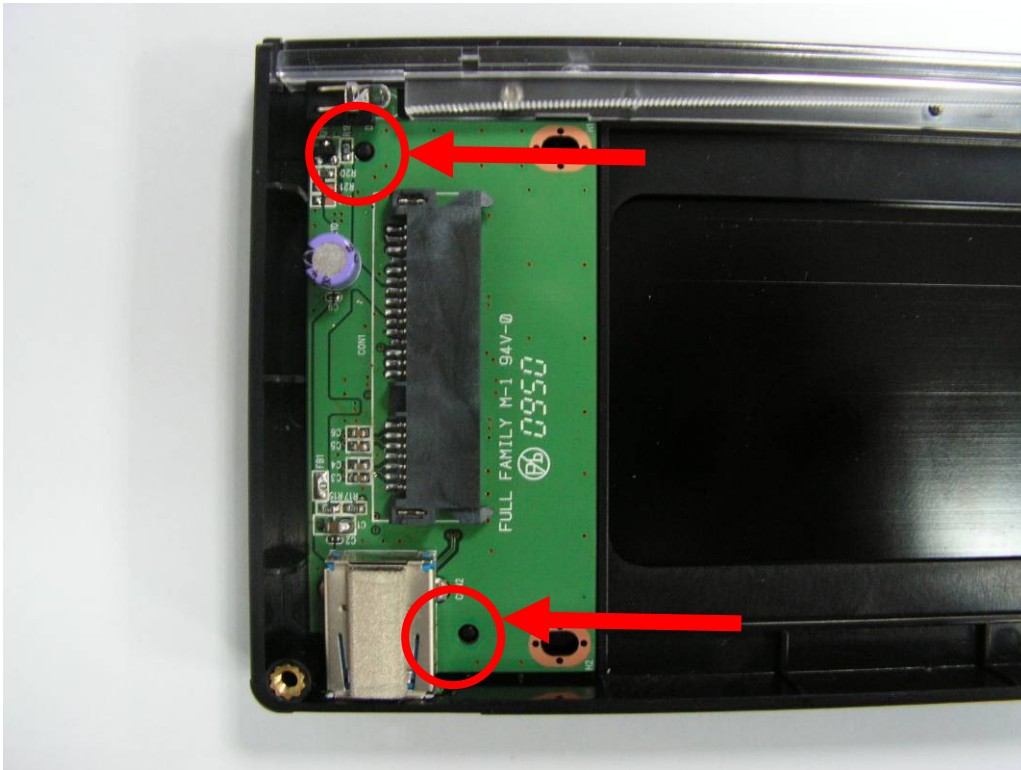


**STEP 2:** Please open the Enclosure cover outward to view the internal structure of the Enclosure.



## External Enclosure Installation Manual

**STEP 3:** Please remove the LED PCB board from the internal structure of the Enclosure. There will be two PCB Tabs when removing the PCB board (As displayed)



*Note: Please be careful when removing the LED PCB board.*

**STEP 3:** Push the SATA Hard Drive toward the SATA connector and make sure the SATA connector is properly connected.



## External Enclosure Installation Manual

**STEP 4:** Screw the Hard Drive onto the LED PCB board tightly.



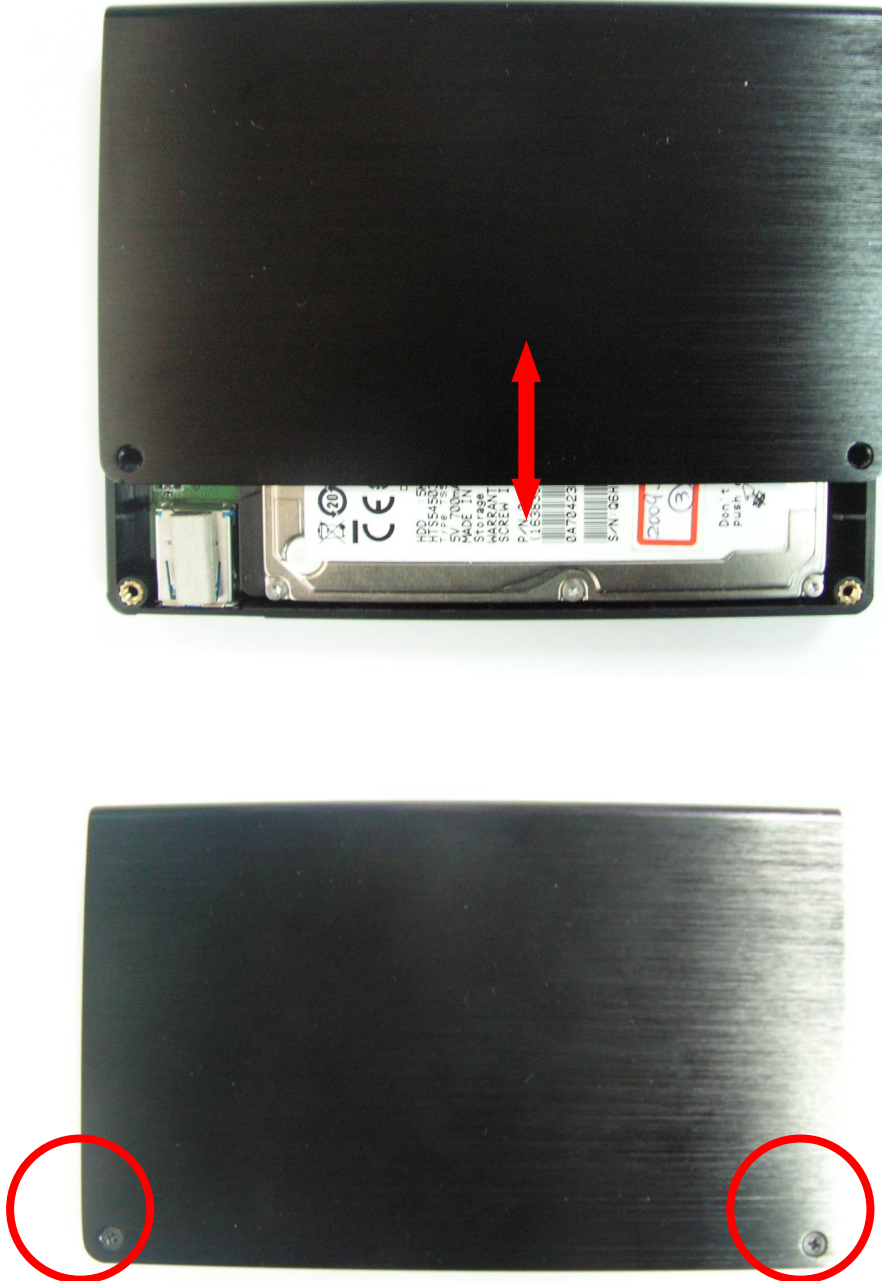
**STEP 5:** Insert the installed Hard Drive tray back into the Enclosure.

Notice : Be sure the PCB Tabs is properly matched. *(Incorrect installation may damage the LED PCB board)*



## External Enclosure Installation Manual

**STEP 6:** Insert the Enclosure cover back onto the enclosure and screw the Enclosure cover tightly.



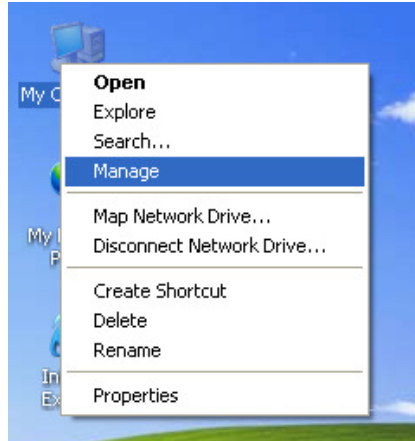
**This will conclude the Hard Drive installation guide**

# External Enclosure Installation Manual

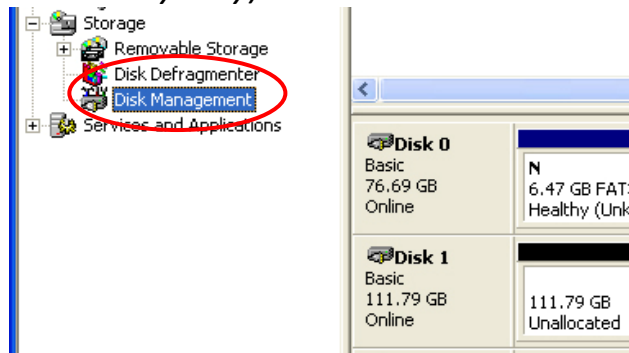
## Hard Drive Formatting Guide

- ☆ You may format your Hard Drive by using the USB connection.
- ☆ Please make sure your External Enclosure is turned on and connected to the PC before formatting the Hard Drive.

**STEP 1:** Right-click on “My Computer” and select “Manage”.

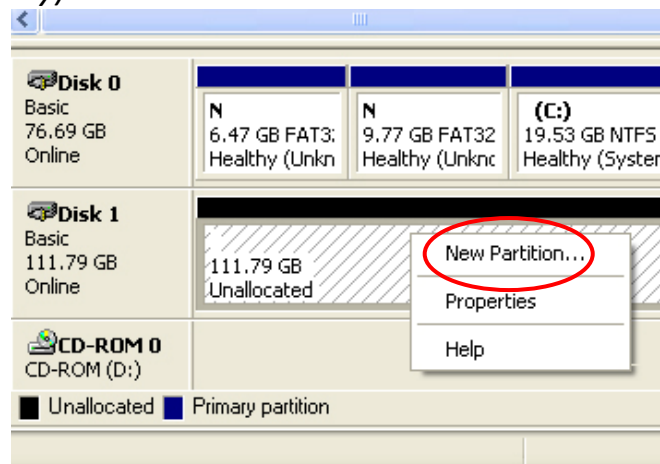


**STEP 2:** Select “Disk Management” and you will see your Hard Drive shown as “Unallocated” (Disk number may vary)



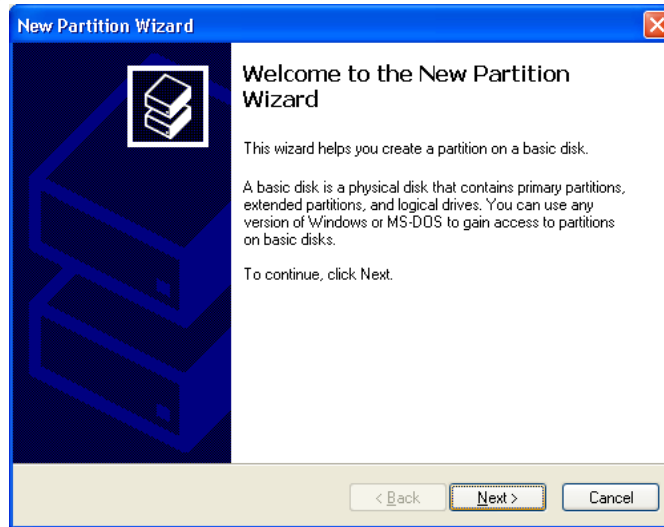
**STEP 3:** Right-click on the “Unallocated” box and select “New Partition”.

(Disk number may vary)

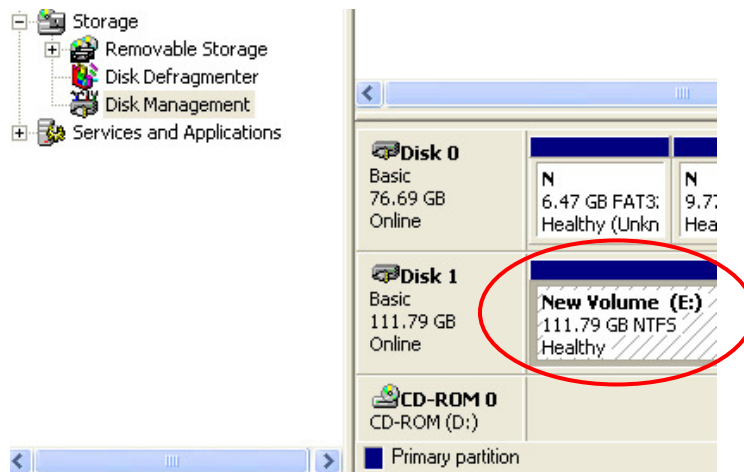


# External Enclosure Installation Manual

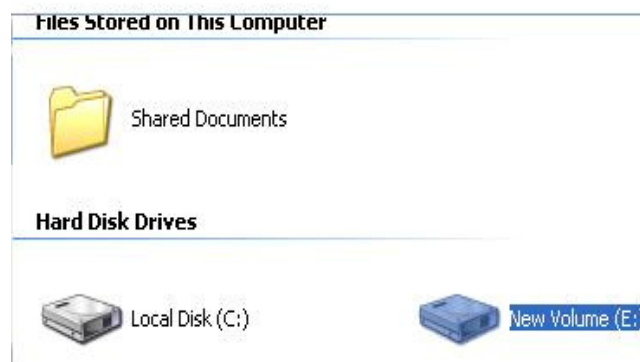
**STEP 4:** The “New Partition Wizard” will appear. Please follow the "New Partition Wizard" step by step instructions to complete the Hard Drive formatting procedure.



**STEP 5:** Once the Hard Drive formatting procedure is completed, the Hard Drive will be recognized as a “New Volume” (New Volume drive letter may vary i.e. “New Volume (Z:)” )



**STEP 6:** Double-click “My Computer”. You will see “New Volume” appear on your PC (Drive letter may vary i.e. “New Volume (Z:)”)



This will conclude the Hard Drive Formatting guide