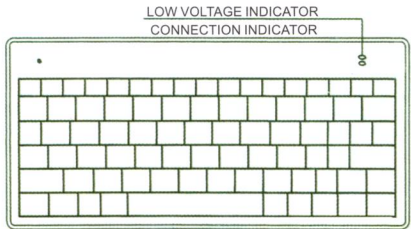
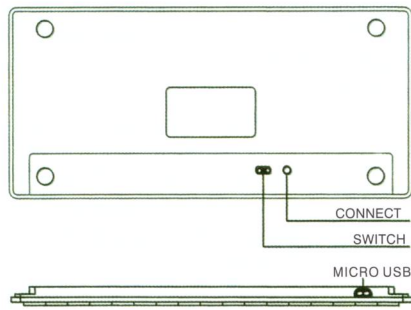


USER MANUAL

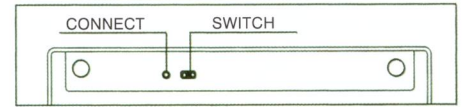


Wireless Keyboard

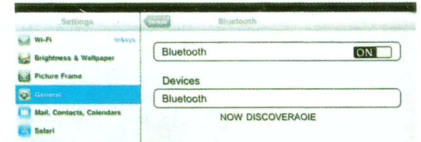


Micro USB port is used for recharging, about 2 hours.

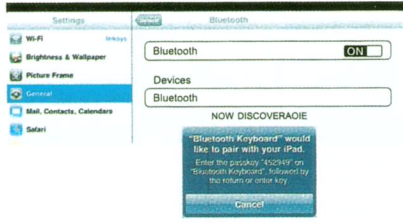
- Starting Bluetooth Keyboard (For MAC System)
Switch on the keyboard, press "Connect" button, then you will see the blue led flash, Bluetooth is looking for the pair device



- Open "setting" of the iPad, chose "General", and click on the Bluetooth button "On", the iPad will looking for the pair device by itself



- When the device "Bluetooth Keyboard" showed on the screen of Pad,click it,they will connect and pair,need to enter the pin code by keyboard,Each time require different pin code,no need to record it,Pin code will be showed on iPad or iPhone when connected.



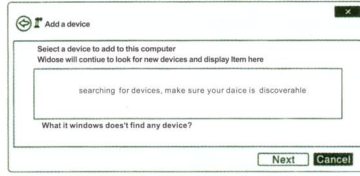
- When you see "connected" on the iPad,the cinnction indicator will go out.



Starting Bluetooth Keyboard(For WindwsOS Syatem)

- Switch on the Bluetobth keyboard;press the "connect" button,Blue LBD will flash,the Bluetooth Keyboard is ready to connecting and pair with PC.

Start-Setting-Control Panel-Add device (Windows XP , Windows2000)
Start-Control Panel- Add Device(Windows 7.Vista),your PC will search Bluetooth device by itself.



- If find "Bluetooth Keyboard",click it and add,enter the pin code which displayed in PC screen by Bluetooth keyboard,(The pin code is different when every connect, no need to record).



- When your screen shows connecting successfully,the LED light will put out.

