

BT VoIP Phone User Manual

Contents

1. Product Introduction	1
1.1 Features	2
1.2 Packing Contents	2
1.3 Hardware and Button Introduction	3
1.4 LCD Description	4
2. Installation	5
2.1 Installing Skype Software	5
2.2 Installing the API Software	5
2.3 Hardware Installation	9
2.4 Setting Audio and Sound Device	10
3. Function Instruction	10
3.1 Power Up	10
3.2 Power Down	10
3.3 Basic Operation and Option	10
3.4 Calling a Skype User	11
3.5 Calling a Phone Number (Skype Out)	11
3.6 Answer a Call	11
3.7 Adjust Volume	12
4. API Program Instruction	12
4.1 About	12
4.2 Exit	12
5. Battery Power Recharge	13
6. Other Internet Messenger Software Setting	13
6.1 MSN Messenger	13
6.2 Yahoo Messenger	14
7. FAQ	14
8. Specification	16
9. Appendix	17
9.1 BT VoIP Phone for IVT	17
9.2 BT VoIP Phone for Toshiba	19

1. Product Introduction

Bluetooth USB Phone (BT VoIP Phone) is a wireless Skype™ phone, which allows you to make and receive Skype calls from a handset without being confined to a PC. The Skype services provided on the PC are now moved to the LCD Display-equipped handset. The regular PC-to-PC Skype calls, SkypeOut™ calls, Skype-In™ calls, and features including Contact list browsing, miss-call lists, call histories, Hold, Profile viewing, are provided. Besides, the echo-eliminating technology improves the voice quality. VAH 200 also can be used as the handset when talking through MSN Messenger™ and Yahoo Messenger™ (Headset mode). Once correctly installed, you are able to use this phone anywhere in a home or office like a mobile phone, as long as it is within the proximity of 30 meters from the PC, which runs Skype.

1.1 Features

- Good immunity to other 2.4GHz RF interference
- Bluetooth 1.2 compliant with Adaptive Frequency Hopping
- 25-30 meters from PC
- Friendly call handling and operation by LCD display and function keys
- Stylish mobile handset design, comfortable to use and carry
- Concurrent Contact list, Missing call list, and Call history as in PC
- Support Skype Versions 1.03, 1.04, 2.0 and 2.5 Beta
- Implement Echo-elimination technology for quality sound
- Built-in Li-Ion battery for up to 6 hours talking time and 3 days standby time.
- 5 types of hold music and 10 types of ringtones

...

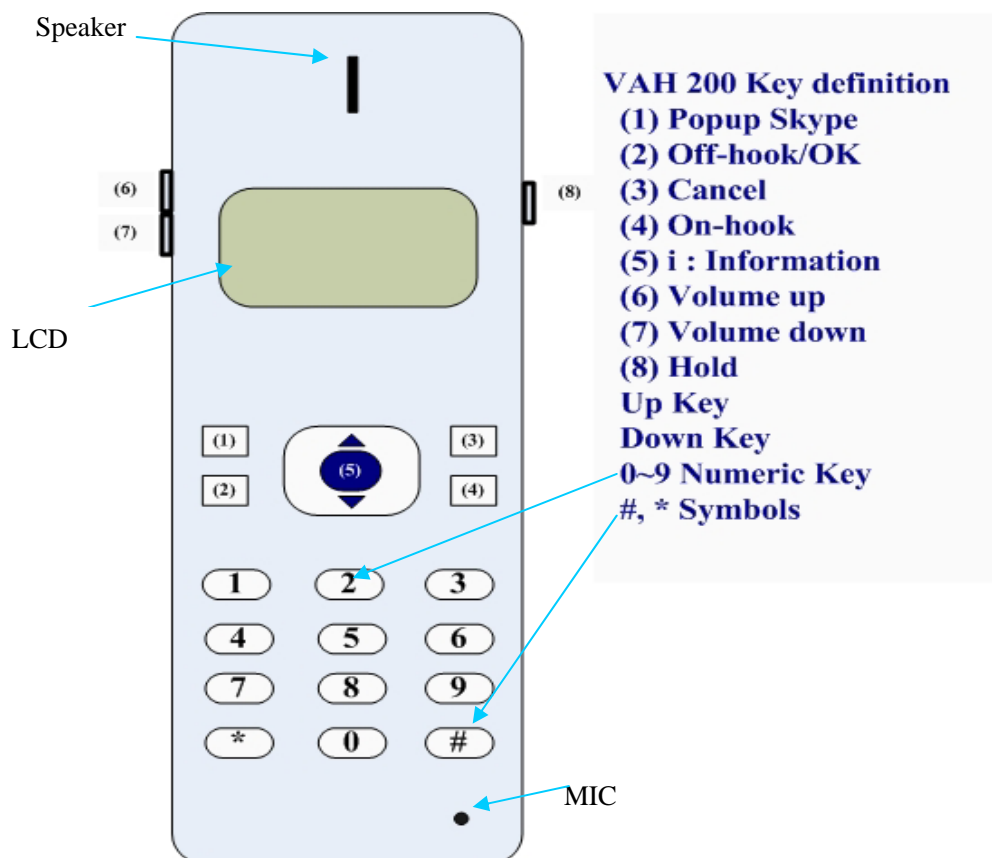
1.2 Packing Contents

BT VoIP Phone Wireless Skype handset x1

Installation CD x 1 (API Software and user manual)

USB Cable x 1

1.3 Hardware and Button Introduction

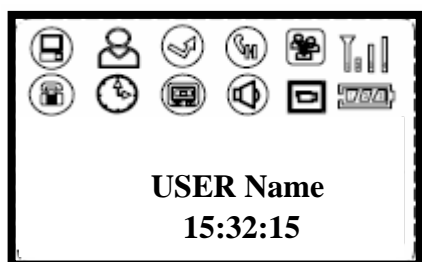


1	Speaker	Speaker	
2	LCD Screen	Display information of Skype	
3	Scroll Up/Down	Select list of contact list, missed call list, called list	
4	Hold	Hold the Skype call	
5	Popup Skype	Popup Skype to switch window	
6	Off-hook/OK	Off-hook	make or answer a call (Power on)
		Enter	sub-menu entering
		Confirm	for option setting
7	Info	Skype friends Profile like Cell phone number ...etc	
8	Digits Keys	Skype out dialer button	
9	Volume Up/Down	Adjust Volume Up and Down	
10	On-Hook	Hang up a call (Power off)	
		Escape sub-menu	
11	Cancel	Press & hold to delete all dialed numbers	
		Press to delete one dialed number	




BT VoIP Phone User Manual

12	Microphone	Microphone
13	Mini USB	MiniUSB Jack to connect to PC USB for power recharge



1.4 LCD Description




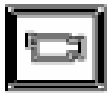
Device Status Icon

	Show Call List User Online status
	RF signal strength indication
	Battery meter

Device Function Icon

Icon	Meaning	What users can do
	Shows Contact List Username/Alias	1. Press “Scroll Up/Down” to select whom to contact 2. Press “Info” key to display the Contact’s profile 3. Press “Off-Hook” key to make a call to the cotact
	Shows Missed call list User name/Alias	1. Press “Scroll Up/Down” to select whom to contact 2. Press “Info” key to display the Contact’s profile 3. Press “Off-Hook” key to make a call to the cotact

BT VoIP Phone User Manual

	Shows Call List Username/Alias	<ol style="list-style-type: none">1. Press “Scroll Up/Down” to select whom to contact2. Press “Info” key to display the Contact’s profile3. Press “Off-Hook” key to make a call to the contact
	Handset Setting	<ol style="list-style-type: none">1. Volume setting: 8 levels2. Display Name setting: Username/Alias3. Key Tone Setting: Key Tone On/Off4. Ring Setting: 10 melodies + PC Ring Tone5. Music on Hold setting: 5 melodies + Mute

2. Installation

2.1 Installing Skype Software

If Skype is not yet installed on your computer, please download the latest version of the software from <http://www.skype.com>

Double-click the installation file you downloaded and then follow the on-screen prompts to complete the installation.

If you have any installation problem about Skype, please refer to Q&A on Skype Website.

2.2 Installing the API Software

- (1) Install the Utility CD into your CD-ROM drive; Double Click My Computer on the desktop, then choose CD-ROM drive.

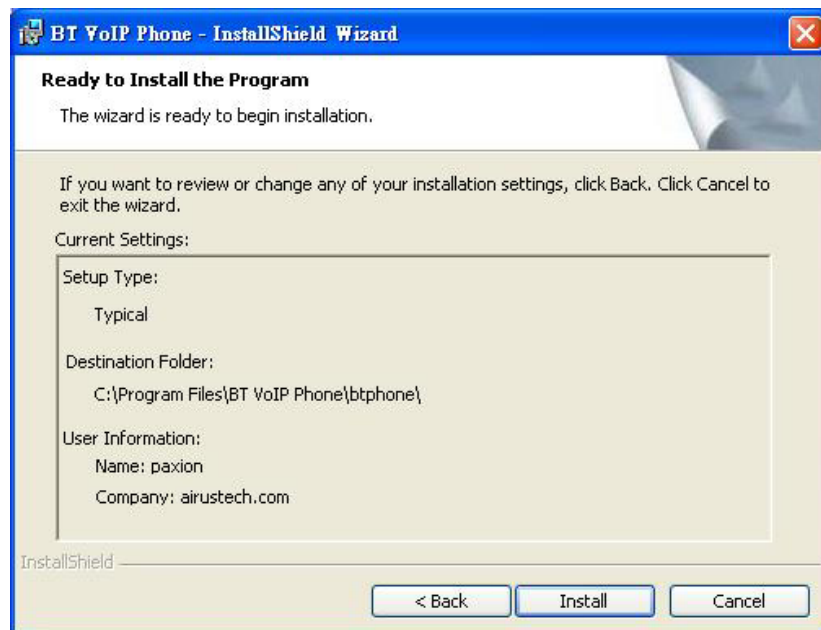


- (2) Follow the pop-up window and click “next”

BT VoIP Phone User Manual

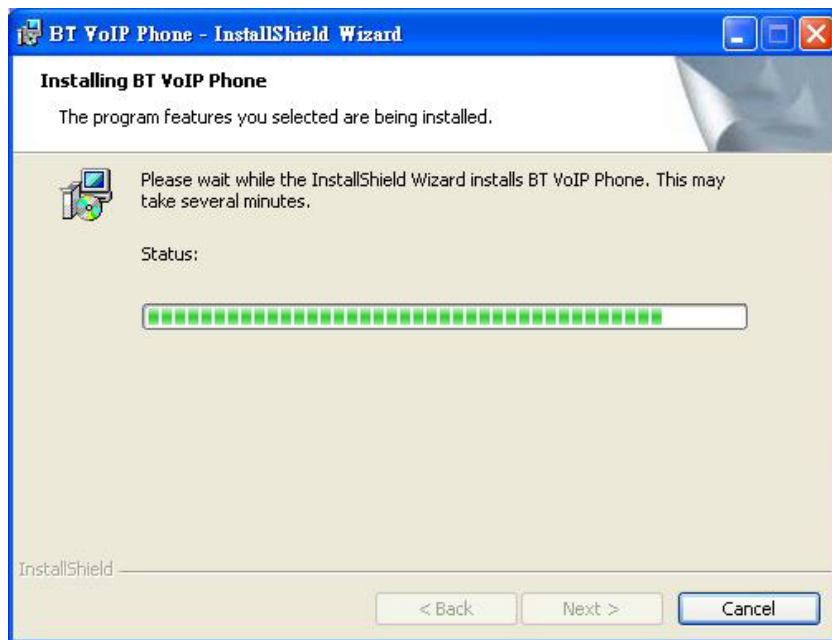


- (3) Continue next window and Click “Next”. You can see the driver installation folder, then click “Install”.

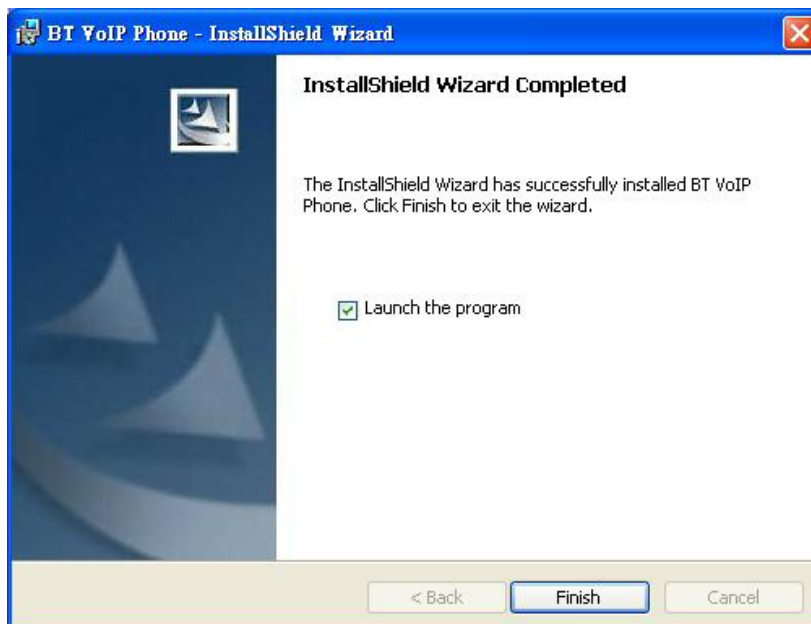


- (4) The installation process running.

BT VoIP Phone User Manual

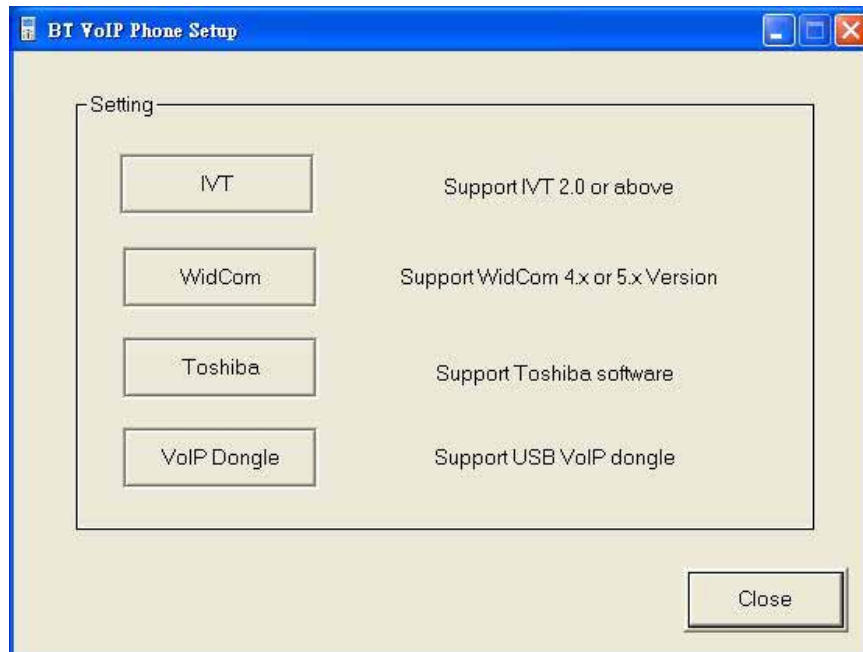


- (5) Click Finish button to complete installation. And launch the application.



- (6) Now the driver installation is completed. And it will launch the BT VoIP Phone Settings. Please make sure the bluetooth dongle binding software (like IVT, Widcom, Toshiba or VoIP version) you had and click the button to setup.

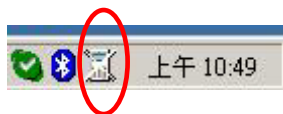
BT VoIP Phone User Manual



- (7) If you click the “IVT” button, you will see the dialog below :



- (8) Before you plug-in your Bluetooth dongle you will see the system tray like below.







- (9) Then you can plug in the Bluetooth dongle and press the handy key “#” until the “Register” appeared. Right-click the system tray icon and press the “Register”. Please reference **9 Appendix**.

- (10) If you see the system tray changed, you can use the BT Skype Phone now!!



BT VoIP Phone User Manual

- (11) Please take a look at the small icon located at the Window System Tray, which is at the right-bottom corner of desktop screen. The icon indicates the status of the Bluetooth USB Skyphone.

	SkypePhone On line
	USB Dongle is not connected
	Skype not talk to BT VoIP Phone driver
	Skype Not Installed on PC

For example, if your USB dongle is not yet inserted into USB port, the above second icon will appear. Please continue with next step.

2.3 Hardware Installation

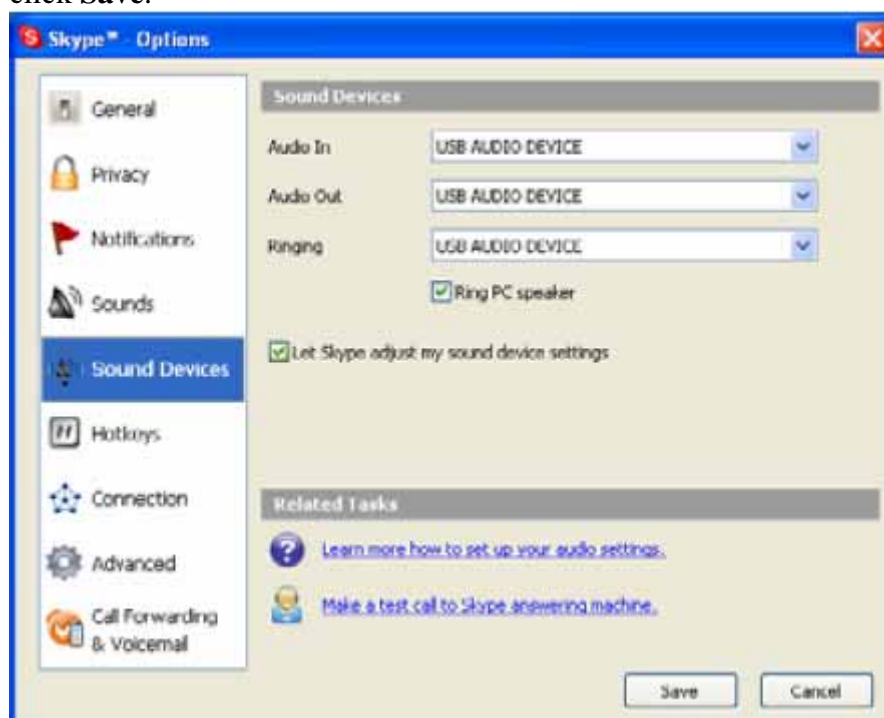
First, you may want to select a USB port on your PC. Make sure there is no metallic stuffs surrounding the USB port at close proximity. This may hinder RF signal from transmitting. Then insert the Bluetooth Skype USB dongle into USB port. After a few seconds, you will see the blue LED on the USB Dongle flashing at frequency of 2-3 seconds. Meanwhile, the following pop-up window will appear on your PC screen. You may select either “Allow this program to use Skype”, or “Allow this program to use Skype, but ask again in the future”. And then click “OK”.



If you select “Allow this program to use Skype”, you will not see this pop-up screen appear again next time when you re-install the driver.

2.4 Setting Audio and Sound Device

Open Skype window, click **Tools** **Options** **Sound Devices**. In the items “Audio In” and “Audio Out”, please select “**USB AUDIO DEVICE**”, then click **Save**.



This will make sure that PC will not mix the Skype Phone with other Sound devices

3. Function Instruction

3.1 Power Up

By pressing the “Off-Hook” button for a couple of seconds, the handset will power up, showing all the icons, and clock.

3.2 Power Down

By pressing the “On-Hook” button for a couple of seconds, the handset will power down.

3.3 Basic Operation and Option

In clock mode. Pressing “**Off-Hook**” will display the Skype table. Users may press the “**On-hook**” to quit.

Pressing “**Up**” or “**Down**” arrow to browse the Skype table. Pressing the

BT VoIP Phone User Manual

“**Off-hook**” button to enter the table; Users may exit the table by pressing “**On-hook**” button. The following table describes the Contents in the Skype table.

CONTACT			Contact list
MISS LIST			Missed Calls
CALL LIST			Calls list
OPTION	VOL SET	0~7	8 level volume adjustment
	HOLD SET	HOLD MUTE	Mute
		HOLD 01~05	5 hold melodies
	RING SET	RING 01~10	10 types of ringers
		RING PC	Remain PC default
	KEY TONE	TONE OFF	Turn off key tone
		TONE ON	Turn on key tone
	NAME SET	USERNAME	Users' account
		ALIAS	Nickname
	RING VOL	0~5	The volume of ring

3.4 Calling a Skype User

While the Contact, Miss list, or Call list in the Skype table.

You may press “**Up**” and “**Down**” key to scroll the list. Then press Dial “**Off-Hook**” to dial for target user via Skype.

If you want to cancel the dialing, you may press “**On-Hook**”.

3.5 Calling a Phone Number (SkypeOut)

Before starting to use this function, please make sure you have paid for the service.

Further information about Skype Out, Please go to web

<http://www.skype.com/>

Dial the phone number by pressing the Digit keypads.

Press the “**Off-Hook**” to call the number.

Please note that all the telephone number dialed in SkypeOut service shall be pre-fixed by “00” and destination “Country Code”. Namely, the digit strings shall contain the following

00 + Country Code + Area code + phone number

3.6 Answer a Call

When the USB Phone is ringing on an incoming call, Press “**Off-Hook**” to answer the call.

3.7 Adjust Volume

Use “**Volume Up**”/“**Volume Down**” button to control the volume while calling to other.

4. API Program Instruction

Right-click the BT VoIP Phone icon in the System Tray, there are three or four items on the list.



4.1 About

The window shows the information of USB Phone API.

4.2 Exit

To quit the API program.

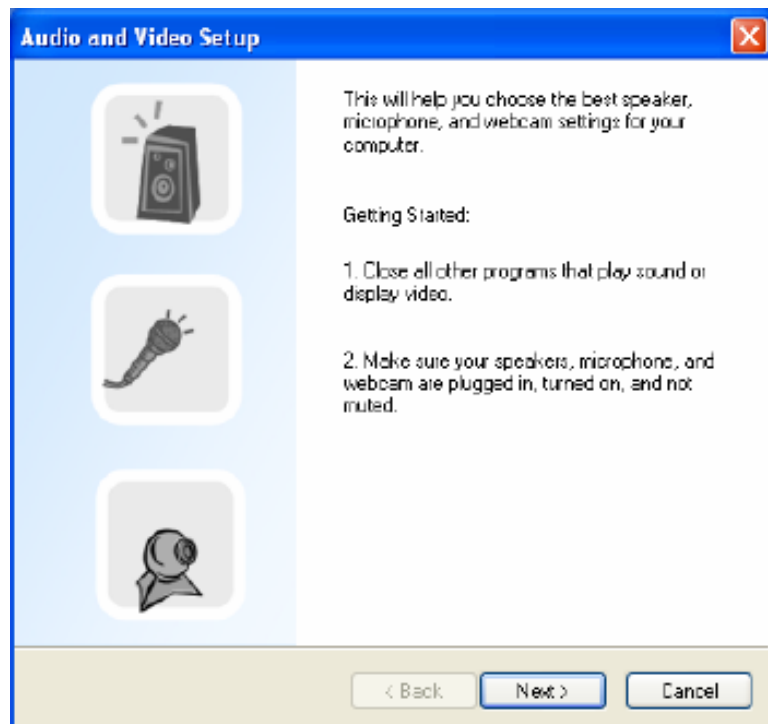
5. Battery Power Recharge

Connect the USB cable's Mini-USB male end into the handset. And connect the other end into a PC's USB port. The Handset will start to charge the power. It will take 3-4 hours to fully charge the handset.

6. Other IM Software Setting (Headset mode)

6.1 MSN Messenger

Open MSN Messenger window, Click Tools Audio and Video Setup....Follow the installation wizard, select to USB AUDIO DEVICE as audio device and test.



BT VoIP Phone User Manual

6.2 Yahoo Messenger

Open Yahoo Messenger, Click Action Call Setup....Follow the installation wizard, select to USB AUDIO DEVICE as audio device and test.



7. FAQ

Q1. Skype is installed and works well without the BT VoIP Phone. But it has no response when I first install the BT VoIP Phone and press any key of the handset does not help.

Answer. 1. Make sure the Dongle is plugged into a USB port of PC

2. Make sure the Handset is powered up

..

Q2. The Dongle has been plugged into a USB port of a PC. But the blue LED keeps on flashing (USB VoIP dongle)

Answer: Make sure you have powered up the handset. If the handset has been powered up, but the LCD on the Dongle still keep on flashing, the handset and Dongle are not communicating. Make sure there is no other dongle the Handset is trying or has pair up with. Then powered up the handset again.

Q3. The handset has been synchronized with the Dongle(with LCD steady), but the clock on the handset ticks from 00:00:00, not at the same time of date as of PC's.

Answer: Check the BT VoIP Phone icon on the System tray. If "USB Dongle not connected", re-insert the dongle again. If it is "Skype does not talk to BT VoIP Phone driver", you may un-install the driver, and install again, following the steps in this manual. If "Skype not installed on the PC", you shall install it.

Q4. How to un-install the BT VoIP Phone driver?

BT VoIP Phone User Manual

Answer: go to PC's "Console"(Start->Setting->Console), select "Add or Remove program", then click "Uninstall BT VoIP Phone". And click the program removal.

- Q5. When you try to browse through the Contact list, the LCD display shows "Contacts". But you cannot go any further to the detailed list.

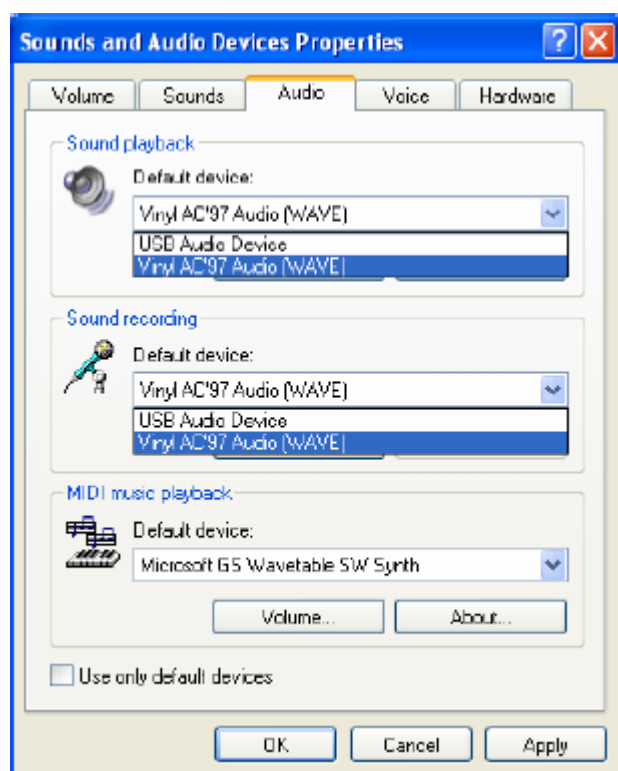
Answer: Make sure the Skyphone is ready (the BT VoIP Phone icon on the System tray is "Skyphone online". If yes, wait several seconds will help. Occasionally the wireless transmission may become slow due to traffic congestion. If otherwise, please refer Q3..

- Q6. While using Skype or Messenger software, the voice is coming from PC instead of from handset

Answer: Make sure you have configured the Phone as USB Audio Devices. Refer **2.4 Setting Audio and Sound Device** and **3.57 Adjust Volume**. In addition, please also refer to **6.1 MSN Messenger setting** in MSN Messenger,

- Q7. There is no voice coming out when play music?

Answer. Please go to PC's **Control Panel Sound and Audio Devices**, set the default device of **Sound playback** and **Sound Recording** to PC sound card, it shown as below:



BT VoIP Phone User Manual

Q8. The other end cannot hear my voice when in Skype calls.

Answer: Check if your Handset is muted.

Q9. These Bluetooth Software version had been tested below :

Answer:

	Version
IVT	2.0 2.1.2 2.1.3 2.3
Toshiba	3.0.13 4.00.30 4.00.35
Widcom	4.x 5.x

8. Specification

Support OS	Window 2000 / XP
Interface	USB 1.1
Audio Frequency	100 Hz to 15KHz
Signal / Noise Description	90 dB
Power Requirement	USB Powering
Current Consumption	Active mode: 120 mA Silent Mode: 45 mA Standby mode: 9 mA Inactive: 0.3mA
Wireless Technology	Bluetooth 1.2 with AFH
RF Frequency	2.4-2.4835GHz
Transmit power	14~20 dBm
Receive Sensitivity	-80dBm
Max. number of Contact list, Miss list, Call record	Unlimited, as on PC
Phone call types	PC-to-PC(Skype), PC-to Phone(Skype Out)
Other IM/Internet phone support	Yahoo! Messenger, M/S MSN
Function Keys	M(Information), Power on/off , Clear, Hold, Off-hook, On-Hook, Volume Up, Volume Down, Up, Down
Audio devices	Ringer: Buzzer Microphone Speaker
System Reset	Reset button
Battery	Rechargeable Li-Ion 700 mAh
Battery Indicator	Low power, Charging, and capacity icon on LCD
RF Signal indicator	RSSI with 4 level icon on LCD

BT VoIP Phone User Manual

LCD	10 Icons and 128 x 32 dot-matrix mono LCD
Operate Temperature	0 to 40
Storage Temperature	-10 to 60
Operate Humidity	< 90 %
Storage Humidity	< 95%
Dimension	125 x 45 x 15mm
Weight	75 (Handset with Battery)

9. Appendix

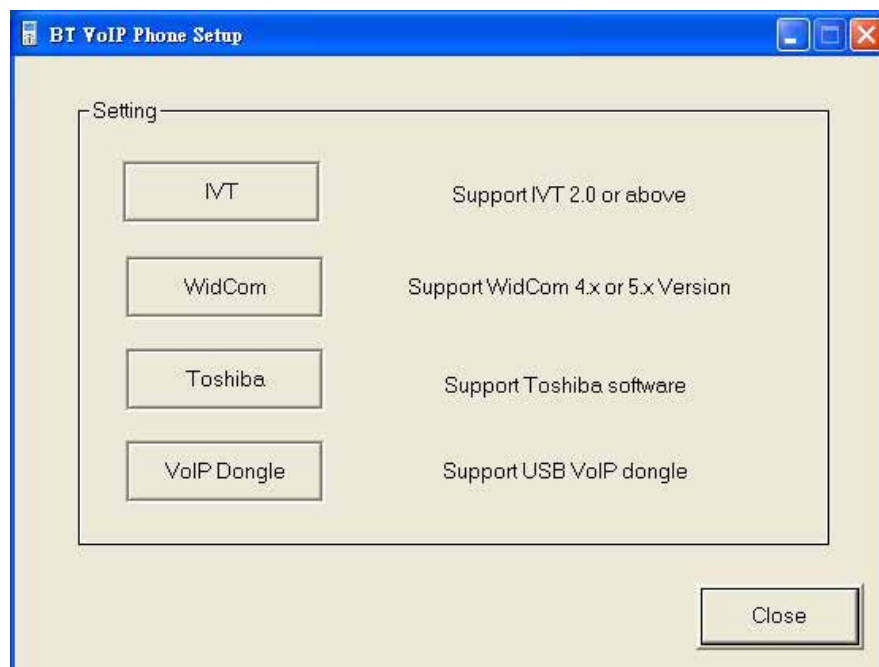
9.1 BT VoIP Phone for IVT

Phone Action :

1. Make sure the Phone is on “General Dongle Linking”
(if the screen showed “Voip Dngle Linking” please press the “*” key to switch the function to “General Dongle Linking”)
2. Pressing the “#” key until the Phone screen shows “Register”
3. Then wait for “SUCCESS”

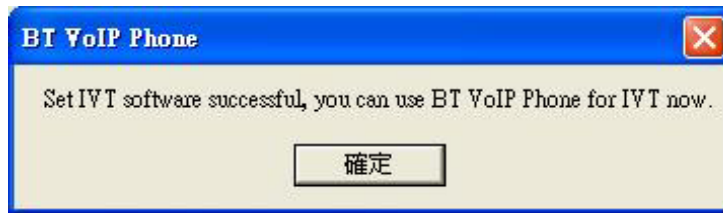
PC site :

1. Open the setting interface

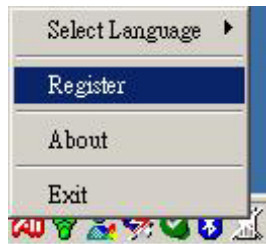


2. Click the “IVT” button, you will see the dialog below :

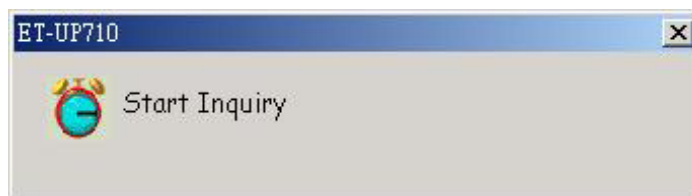
BT VoIP Phone User Manual



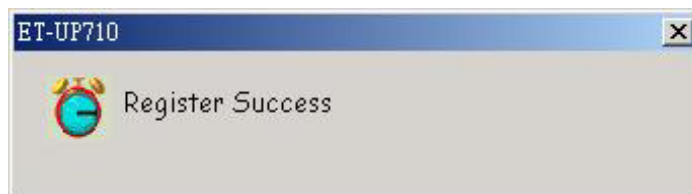
3. Move to the system tray and point to the item then right click.



4. Click the "Register" item, you will see the screen below :

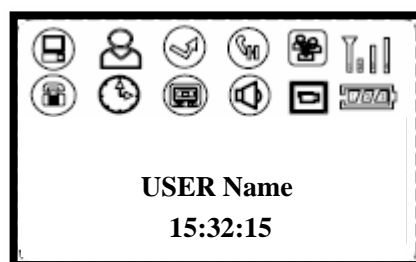


5. Then wait until register success.



If the pairing success, you will see the screen below :

1. The user Skype ID



2. See Figure

BT VoIP Phone User Manual



Compatible List :

Version : 2.0 2.1.2 2.1.3 2.3

9.2 BT VoIP Phone for Toshiba

Phone Action :

(action while the pc site step 4 start)

1. Make sure the Phone is on “General Dongle Linking”
(if the screen showed “Voip Dngle Linking” please press the “*” key to switch the function to “General Dongle Linking”)
- 2.Pressing the “#” key until the Phone screen shows “Register”
- 3.Then wait for “SUCCESS”

PC site :

1. Open the Toshiba software.



BT VoIP Phone User Manual

2. Click the “New connection”

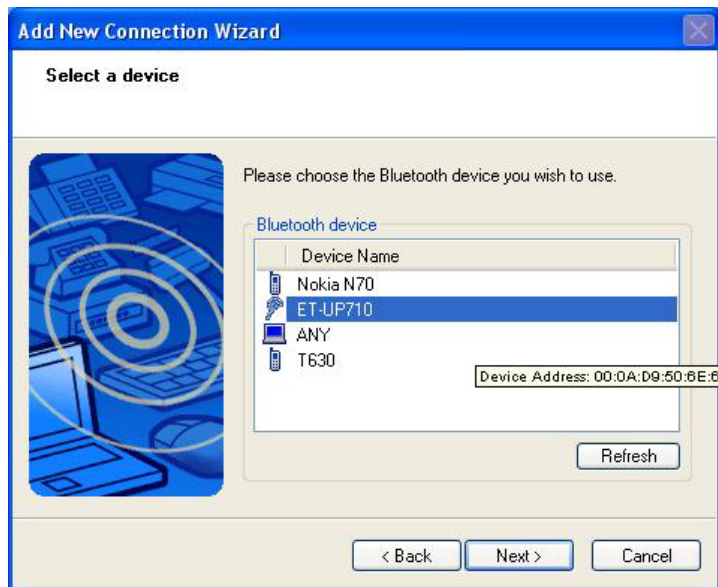


3. Make sure the Phone is on register status
4. Toshiba software will search the Bluetooth device
(start the phone action)



BT VoIP Phone User Manual

5. The Toshiba software will show the device.

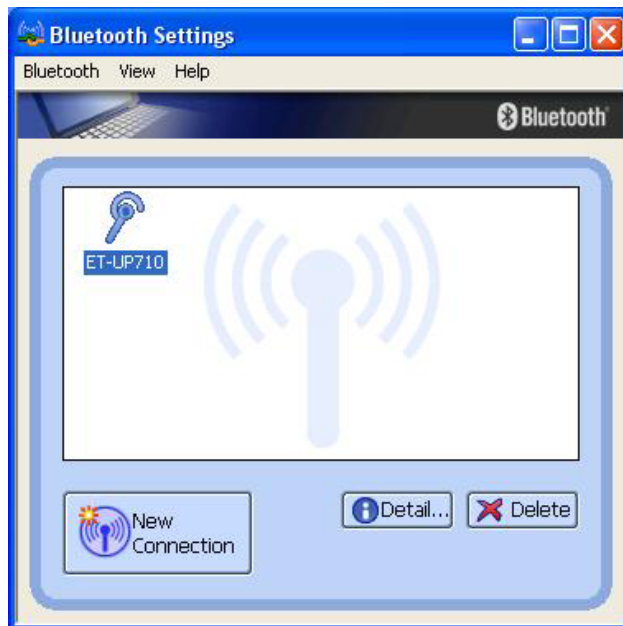


6. And please input the Bluetooth PIN code "0000"



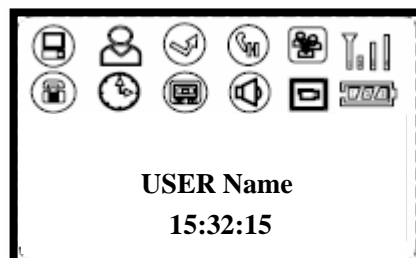
7. Waiting until the pairing finished and you will see the screen :

BT VoIP Phone User Manual



If the pairing successes, you will see the screens below :

1. The user Skype ID



2. Figure below



Compatible List :

Version : 3.0.13 4.00.30 4.00.35