

Beini (BT5) Manual

Introduction:

The Beini is simple software to reduce much complicated setup. It is easy to decrypt the password of all SSIDs which were protected by security like WEP & WPA.

(Faster & Easier better than BT3 & BT4)

Step 1.

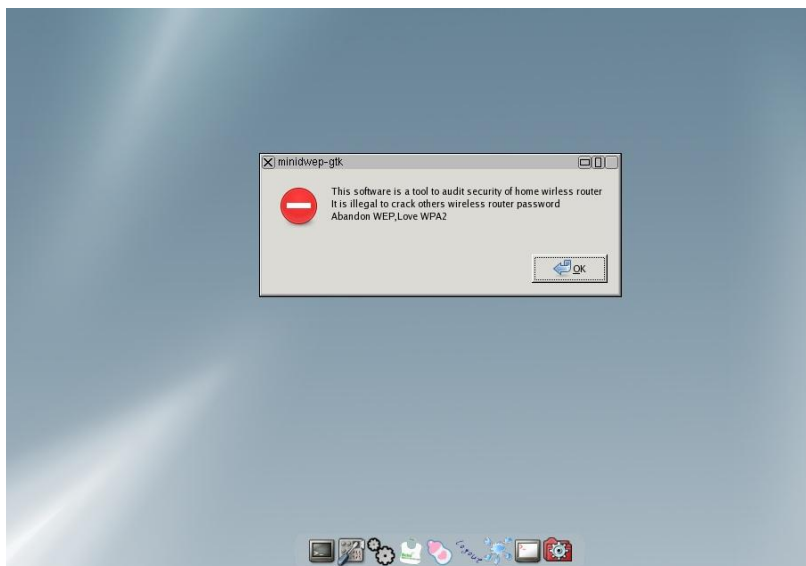
Put in the Beini CD and reboot computer.

Entry BIOS to change DVD ROM boot and confirm and you will enter the Beini operation.



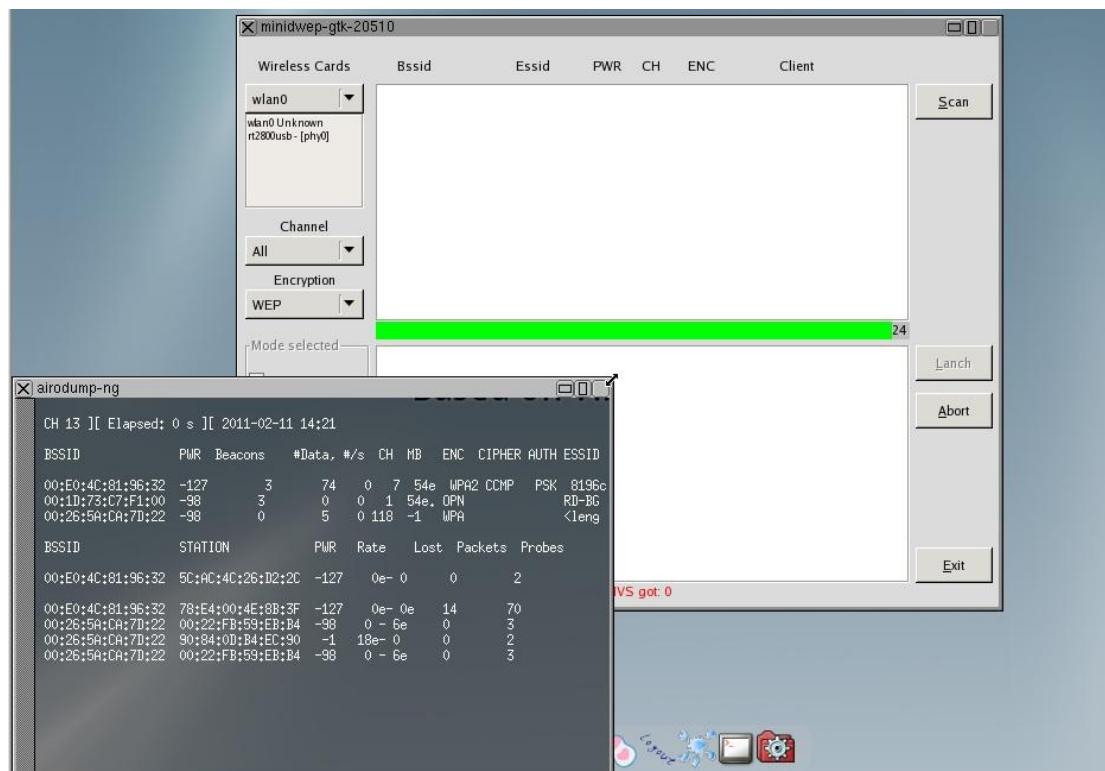
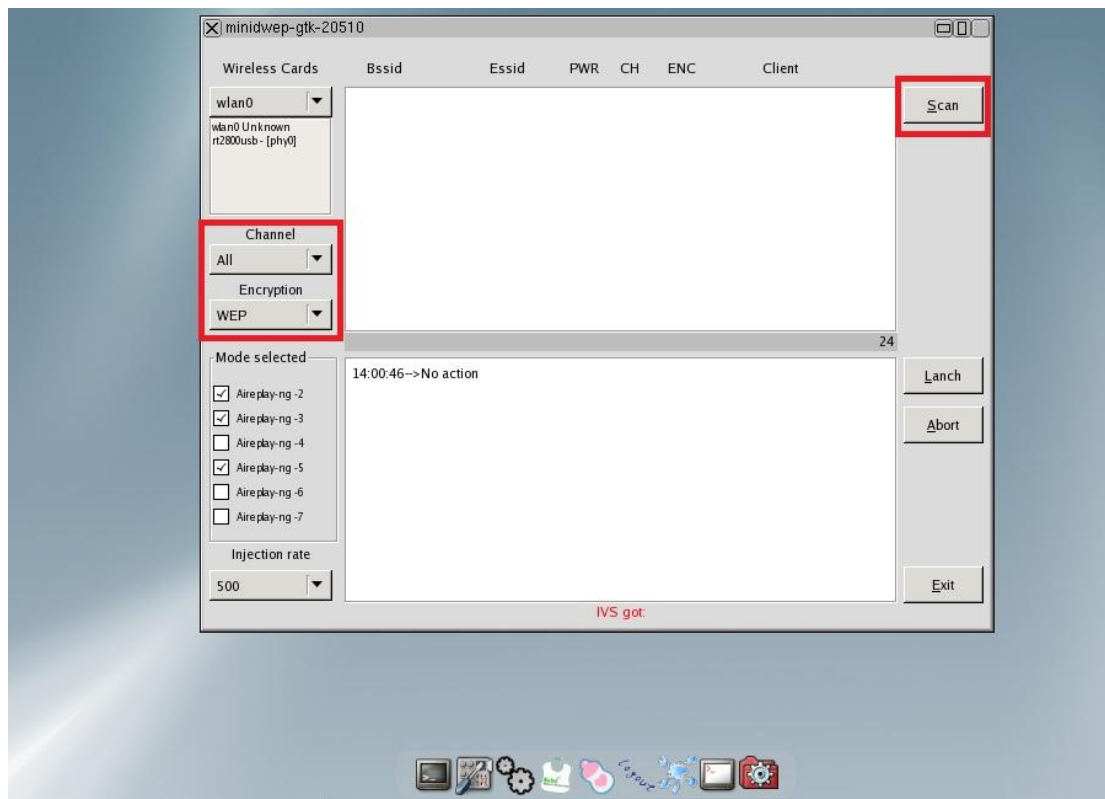
Step2.

Click the view of red square under the Beini operation. When you see the warning, please just ignore it.



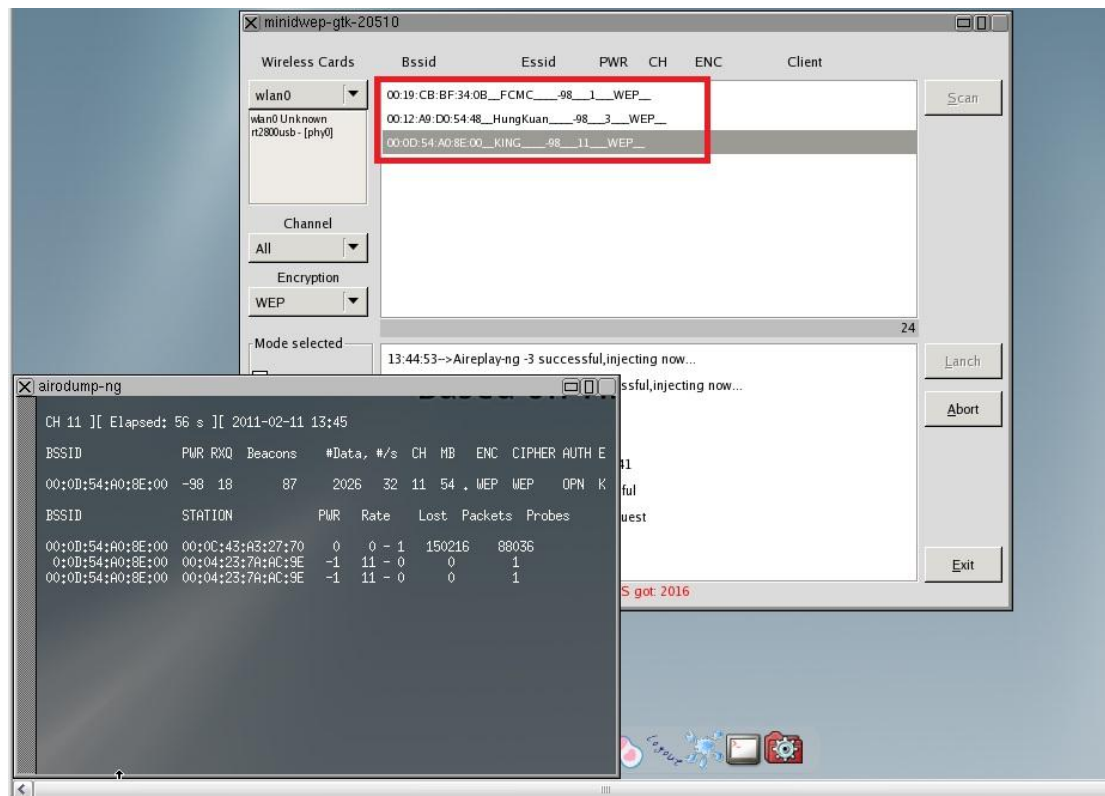
Step 3.

Setup the **Channel & Encryption** and then click the **Scan** to Search all SSIDs which your network reached.



Step 4

The SSIDs will be searched by WLAN network card and let you try to decrypt them.



Step5

After the step of decryption, the message will show the successful password for you.

