

5.25" INTERNAL MULTI I/O PANEL

USER MANUAL



--- INDEX ---

■ Trademarks	2
■ Introductions	2
■ System Requirements	2
■ Package contents	2
■ How to install your Multi I/O to your drive bay	2
■ Pass through multi I/O Pin assignments	3
■ Card Reader Driver Installations	4
Windows® XP Installation example	4
■ How to access your media memory card	6
■ Indicator Description	8
■ Applications	8
■ Product specifications	9

■ Trademarks

All names and products mentioned below are registered trademarks of their respective companies.

■ Introductions

The internal Multi I/O panel device is ideal for 5.25inch drive bay installation. It is the best solution for direct access USB/IEEE1394/Audio/eSATA etc I/O port and media card slot in front of your computer.

The five media card slots can support over twenty types of media cards, advantage of card reader, it can accept most popular small form factor flash cards directly; such as Mini-SD, RS-MMC, MS-Duo and small T-flash, Micro SD. You can use them to read, write or erase data easily without requiring any adapter. It also supports standard media memory cards such as Secure Digital card (SD), Multi Media card (MMC), Compact Flash™ (CF), IBM® Microdrive, Smart Media™ (SM), Memory stick (MS), Memory stick pro, xD picture card and other compatible memory cards.

In addition to the media reader, it also provides a variety of digital/analogy media I/O pass through ports that all in one on this panel like as USB, IEEE1394, Line-in, Line-out, Microphone and High speed eSATA ports, all of connectivity allow you direct access in front of your computer.

■ System requirements

- IBM® PC with an available 5.25" drive bay.
- On-board USB, SATA ports and external 1394 port, audio I/O ports.
- Windows® 98SE, Windows® 2000, Windows® ME, Windows® XP

■ Package contents

- One internal Multi I/O panel
- Card reader driver disc with manual
- Mounting screws

■ How to install your Multi I/O to your drive bay



CAUTION:

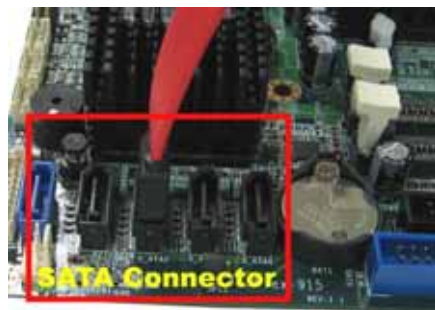
- Electrostatic discharge can damaged electronic components. Be sure you are properly grounded before beging any procedure.
- Handle this product by the plastic stand. Do not touch any electronic components.

1. Turn your computer off and disconnect the power cord before installing this product.




2. Remove the cover of your computer. (Refer to your computer hardware manual for instructions on removing the cover)
3. Remove 5.25inch plastic cover on PC front panel.
4. Put the Multi I/O device with cables into the 5.25inch drive bay.
5. Mount Multi I/O device firmly in both tracks of drive bay by four screws that supplied with the package.
6. Locate an available PCI expansion slot and remove the bracket cover.
7. Install bracket with external audio and IEEE1394 cables, they are all for the outside I/O connection.



8. Connect internal on-board USB and SATA in correct connector. (Please refer to the following photos and your computer's hardware manual for correct connection.)
9. When you complete above installation, please check all cables are plugged firmly.
10. Replace computer's cover and reconnect the power cord.



■ Pass through multi I/O Pin assignments

Pin assignment of cable																							
SATA Cable	AUDIO Cable	1394 Cable	USB Cable																				
			<table border="1"> <tr><td>1</td><td>2</td><td>3</td><td>4</td><td>5</td></tr> </table>			1	2	3	4	5	<table border="1"> <tr><td>2</td><td></td><td></td><td></td><td>10</td></tr> <tr><td>1</td><td></td><td></td><td></td><td>9</td></tr> </table>			2				10	1				9
1	2	3	4	5																			
2				10																			
1				9																			
SATA	<ul style="list-style-type: none"> ■ Micro phone ■ Line-out ■ Line-In 	IEEE1394	Card Reader			USB-1 & USB-2																	
Standard SATA plug	Mic Plug (Pink Color) Line-in Plug (Blue Color) Line-Out Plug (Green Color) *All plugs are 3.5mm	Standard IEEE1394 6-pin plug	P1. ▲	VBUS	Red	P1. ▲	VBUS-2	Red															
			P2.	D-	White	P2.	VBUS-1	Red															
			P3.	D+	Green	P3.	D- 2	White															
			P4.	GND	Black	P4.	D- 1	White															
			P5.	NC	-	P5.	D+ 2	Green															
			-	-	-	P6.	D+ 1	Green															
			-	-	-	P7.	GND 2	Black															
			-	-	-	P8.	GND 1	Black															
			-	-	-	P9.	NC	-															
			-	-	-	P10.	Stopper	-															

Note:

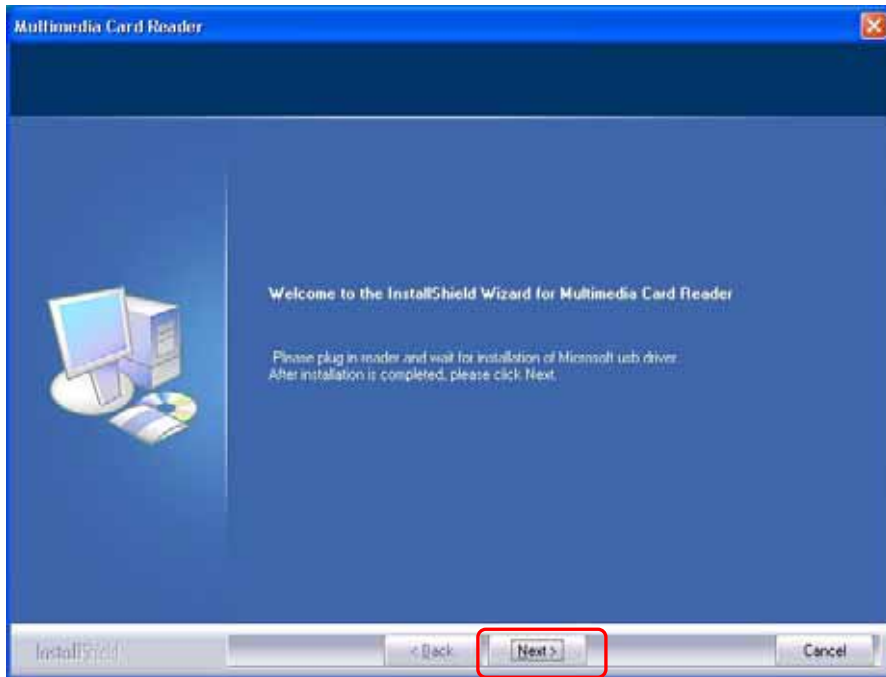
1. * Stopper is a protected key to avoid a wrong connection.
2. Each housing connector pin1 was marked with a“▲” symbol.
3. It may change cable's color that list on above table, but the pin definition is without change.

■ Card Reader Driver installations

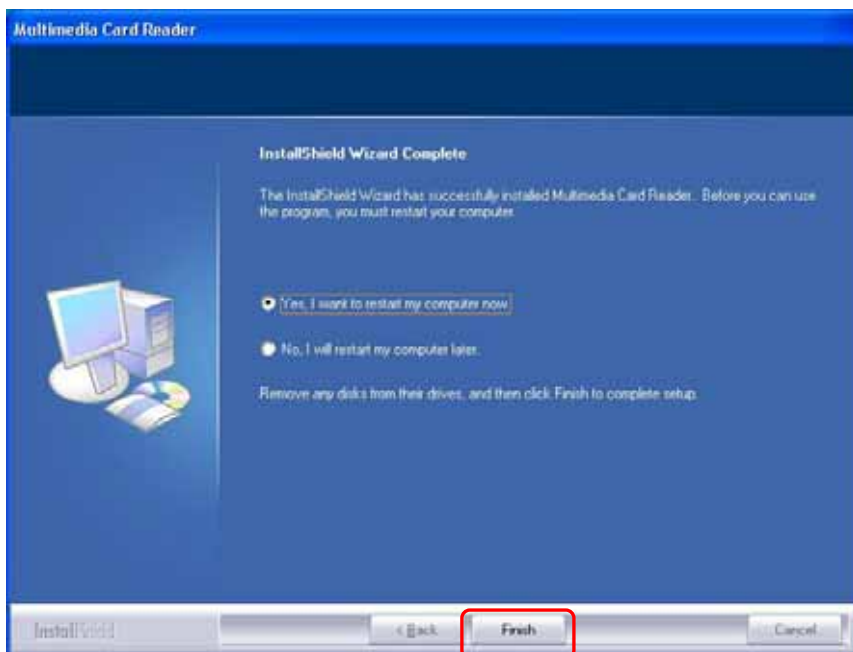
The card reader need to install an application driver for showing media icon on your Windows, you can find the software program in bundle disc and follow next steps to complete the driver installation.

Windows® XP example:

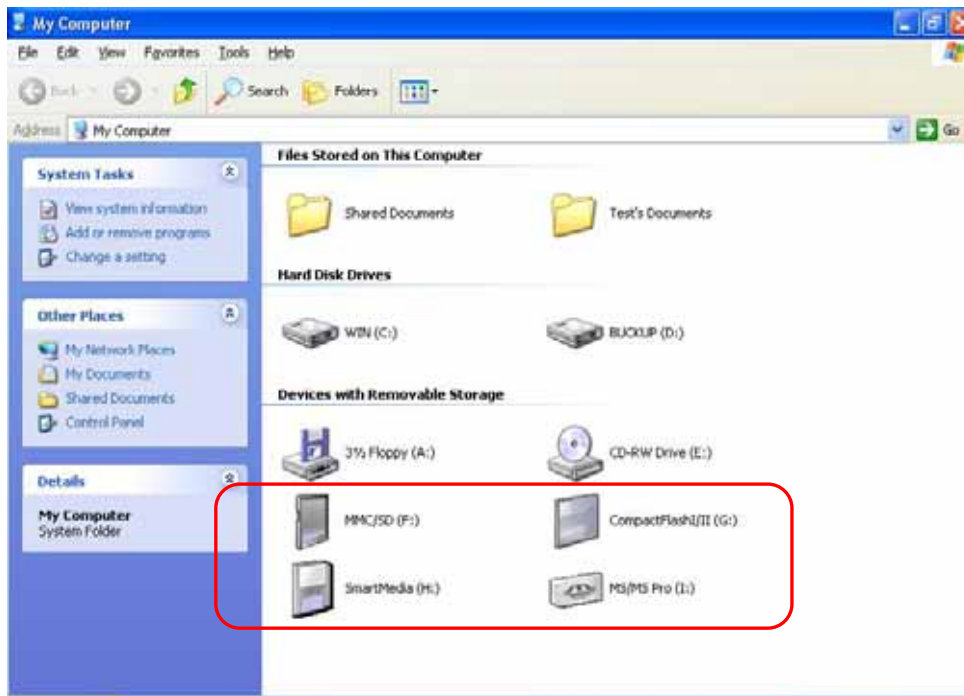
1. Close all of your exist executing file.
2. Insert driver disc into the CD-ROM drive.
3. Double click on ” **Driver**” folder.
4. Double click on ” **setup**” icon.
5. Click “**Next**” button to begin software installing.



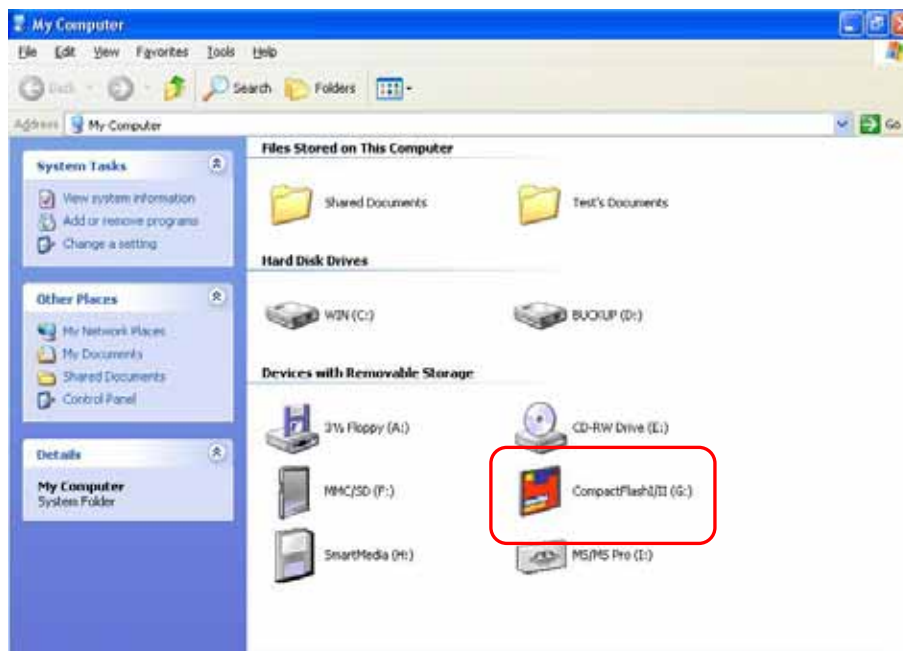
6. This window shows your driver has completely installed. Click “**Finish**” to restart your computer.



7. Reboot your system, Windows will detect reader controller and display four media icons in “**My Computer**”, now you can insert your memory card for application.



8. When system detects an existent media card has inset successfully in card slot, the gray media icon will change to a color icon for identification. (Refer to the following illustration)
If you have any problem of using your media card, next section will show you “**How to access your media memory card**”.



Note: The data bus of Micro-SD media slot is shared with MMC/SD slot, so you can only find four media icons on display. For this reason the card reader can only accept either MMC/ SD or Micro-SD media card at the same time, and they will be recognizable by the same MMC/SD icon.

■ How to access your media memory card

This card reader module provides five media slots for different types of media cards application. You must load each media card in correct slot and do not attempt to insert the card in reverse direction by force. It may damage your card or card reader slot by incorrect loading. Please read this section thoroughly before using it.



NOTE:

- All gold contact area of media memory cards must be downward when you are loading into each slot except mini SD is upward.
- The Card Reader can accept most popular small form factor media cards directly without any media adapter.

1. **SM/xD slot:** The dual SM/xD slot places in top-left of front bezel, it is labeled as “SM/xD” which can accept Smart Media™ memory card or xD picture card. (xD picture card must load from a fillister side.).



Loading direction

2. **CF/MD slot:** This slot places in bottom-left of front bezel, it is labeled as “CF/MD” which can accept Compact Flash™ memory card type I/II or Microdrive.



Loading direction

3. **SD/MMC slot:** This slot places in top-middle of front bezel, it is labeled as “**SD/MMC/Mini SD/RS MMC**” which can accept Secure Digital card, mini SD, Multi Media card or RS MMC etc. (The **mini SD**’s gold contact area must be upward and load from a up fillister side.)



Loading direction

4. **MS/Duo slot:** This slot places in bottom-right of front bezel, it label as “**MS/DUO**” which can accept Sony®MS、MS-Pro、MS-DUO memory cards.



Loading direction

5. **Micro SD slot:** The Micro SD also name as T-Flash. This slot places in top-right of front bezel, it label as “**Micro SD**” which can accept Micro SD memory card directly.

Note:

This Micro SD’s data bus is shared with SD/MMC slot, in other words you can only choose one in between the two, when you use SD/MMC or Micro SD memory cards.



Loading direction

■ Indicator Description

The card reader provides a R/W (read /write) status indicator for card slot diagnosis.

OFF: Normally the R/W indicator is off.

ON: When reader detects a media memory in slot, the R/W indicator will turn ON.

Flash: While data is transmitting between PC and memory card, it will turn flash.



CAUTION:

Please do not remove any memory card while data is transmitting between PC and card reader or when R/W status LED is flashing, it may result your computer to crash and the lost of valuable data.

■ Applications

Following picture provide a clear overview for your reference of how to apply and connect with your device to this multi media I/O panel.



■ Product specifications

Card Reader Specifications	
Card Reader Chipset:	ALCOR AU-6375
Standard Compliant:	<ul style="list-style-type: none"> ●USB specification Rev 1.1/2.0 ●USB mass storage class drive
Support File Format:	FAT 12/16/32 /NTFS
Five Memory Slots:	<ul style="list-style-type: none"> ● CF/MD, SM/xD, SD/mini SD/MMC, MS/MS-Duo, Micro SD/T-Flash ● Adapter free
Media Icon Display:	MMC/SD/(Micro SD/T-Flash), Compact Flash I/II, Smart Media/xD, MS/MS Pro
Media Card Supports:	CF TypeI, CF TypeII, CF UltraII, Microdrive, Magicstor, SMC, SM ROM, xD, M-series xD, SD, SD Ultra II, mini SD, MMC-I, MMC-II, MMC 4.0,MMC Dual Voltage, RS-MMC, RS-MMC Dual Voltage, RS-MMC 4.0, Trans Flash, Micro SD, MS, MS Select, MS ROM, MS Magic Gate, MS-PRO Magic Gate, MS-DUO Magic Gate, MS-PRO-DUO etc.
Write-protected:	Support media card manual lock.
Indicators:	One card detected and data accessing indicator
Interface types:	USB 5-Pin housing type
Cable Lengths:	Internal USB cable 50cm
Icon software support:	Supports all windows and including Windows® 98/SE driver.
PCB Dimensions:	52*96*1.6mm (W*L*H)
PCB Layers:	Two layers
OS Support:	<ol style="list-style-type: none"> 1. Windows® 98/SE, Windows®ME, Windows®2000, Windows®XP 2. Linux OS 2.4.X or higher
Multi IO Board Specifications	
ESATA Port	<ol style="list-style-type: none"> 1. Pass through eSATA connector 2. Internal SATA cable 50cm with SATA plug
Line Out Jack	<ol style="list-style-type: none"> 1. Pass through green line-out jack 2. External Audio cable 100cm with 3.5mm stereo Plug
Line In Jack	<ol style="list-style-type: none"> 1. Pass through blue line-in jack 2. External Audio cable 100cm with 3.5mm stereo Plug
Micro Phone Jack	<ol style="list-style-type: none"> 1. Pass through pink micro phone jack 2. External Audio cable 100cm with 3.5mm micro phone Plug
USB-1 port	<ol style="list-style-type: none"> 1. Pass through USB A-type receptacle 2. Internal USB cable 50cm
USB-2 port	<ol style="list-style-type: none"> 1. Pass through USB A-type receptacle 2. Internal cable type 50cm
IEEE-1394 Port	<ol style="list-style-type: none"> 1. Pass through IEEE1394 6-pin receptacle 2. External cable 100cm with IEEE1394 Plug
PCB Dimensions:	131*70*1.6mm (W*L*H)
PCB Layers:	Two Layers
Unit Dimensions:	149*156*42.5 mm (W*D*H)
Unit Material:	Plastic ABS
Certification:	FCC Class B, CE
All Materials:	RoHS Compliant

* This specification may be revised without notice.

P/N: M-606HRU-224A5