

POWERLINK GM5

High Power Wireless LAN USB Adapter
802.11b/g/n w/High Gain 5dBi Antenna

User Manual

Part#:PL-GM5

Contents

CHAPTER 1 GETTING START	3
MINIMUM SYSTEM REQUIREMENTS.....	3
WINDOWS 7 USERS.....	3
<i>Steps for changing notification level of UAC settings.....</i>	<i>4</i>
<i>Steps for Enabling Windows built-in Administrator account.....</i>	<i>5</i>
CHAPTER 2 INSTALLATION AND UNINSTALL	8
PART I – INSTALL WLAN ADAPTER DRIVER	8
<i>Install WLAN adapter Driver for Windows XP</i>	<i>8</i>
<i>Install WLAN adapter Driver for Windows 7</i>	<i>11</i>
PART II - INSTALL GIVE ME FIVE UTILITY	11
<i>Install Give Me Five utility for Windows XP</i>	<i>11</i>
<i>Install Give Me Five utility for Windows 7</i>	<i>13</i>
UNINSTALL GIVE-ME-FIVE UTILITY	13
CHAPTER 3 GIVE ME FIVE USER GUIDE	16
QUICK START	16
FUNCTION DESCRIPTION	18
<i>File Menu.....</i>	<i>19</i>
<i>Tools Menu</i>	<i>19</i>
<i>About Menu</i>	<i>19</i>
<i>Connections Pane.....</i>	<i>19</i>
<i>Properties Pane</i>	<i>19</i>
<i>Action Bar.....</i>	<i>19</i>
<i>Status Bar.....</i>	<i>20</i>

POWERLINK GM5 Wireless LAN 802.11b/g/n Ultra High Power USB Adapter

Getting Start

Minimum System Requirements

- Pentium® 300 MHz or higher compatible processor
- At least one available USB 2.0 or 1.1 port
- At least one built-in NIC interface.
- The installation CD
- 5Mbytes free hard disk space.
- Windows, XP, XP professional, Vista, or Windows 7.

Before you proceed with the installation, please notice the following descriptions.

Note

1. *Windows XP users must install **SP3** or above.*
2. *If you have installed the WLAN USB driver & utility before, please uninstall the old version first.*
3. *The installation guide herein is operated under Windows system. For Linux or Mac driver installation guide, please refer to the instruction in **README** at directory the driver has stored in CD-Rom.*
4. **Give Me Five** utility support Windows operating systems only. Linux and MAC users Give-Me-Five wireless adapter can only act as a normal wireless adapter, without the advance function the Give-Me-Five have.
5. *Many WLAN chipset vendors have provided proprietary UI. If users already have pre-installed WLAN adapter on system. We strongly suggest to turn off proprietary UI and switch to **Windows zero configuration** instead.*

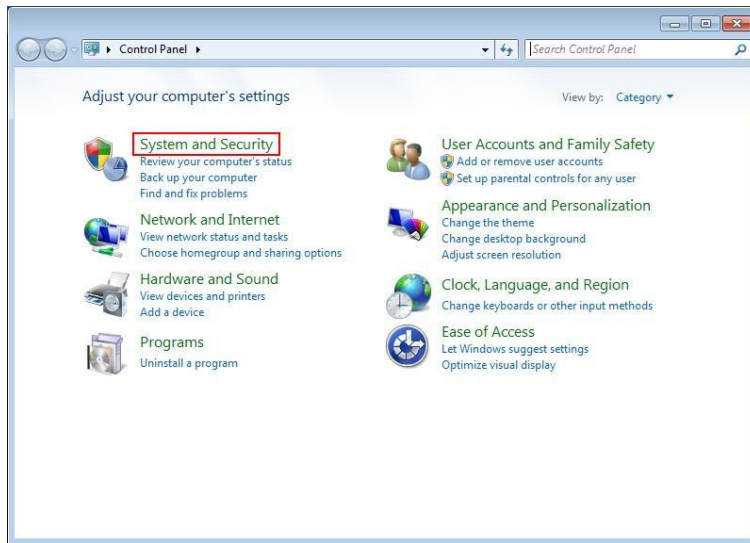
Windows 7 Users

To install **Give Me Five** utility and execute. Windows 7 Home Edition users have to change notification level of UAC (User Account Control) settings to "**Never Notify**". For Windows Professional and Ultimate Edition users, in addition to change UAC settings, enable and switch to Windows built-in Administrator account get the most performance of operation.

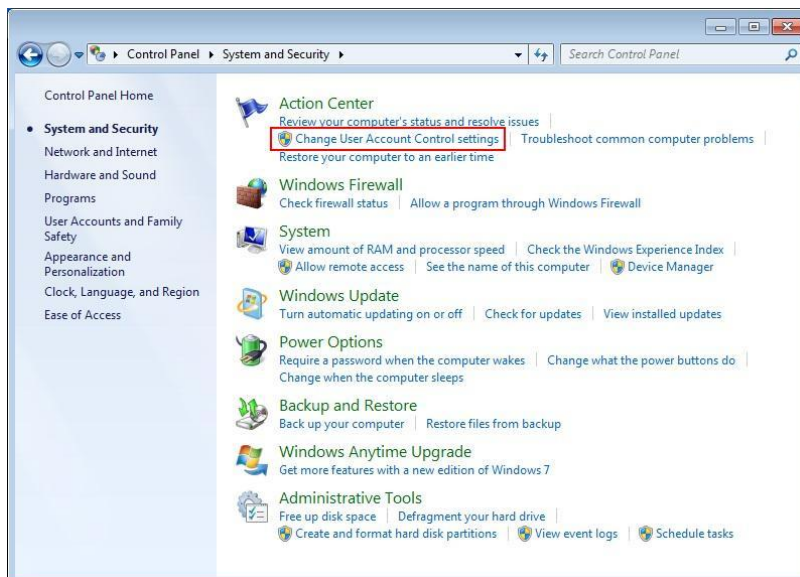
POWERLINK GM5 Wireless LAN 802.11b/g/n Ultra High Power USB Adapter

Steps for changing notification level of UAC settings

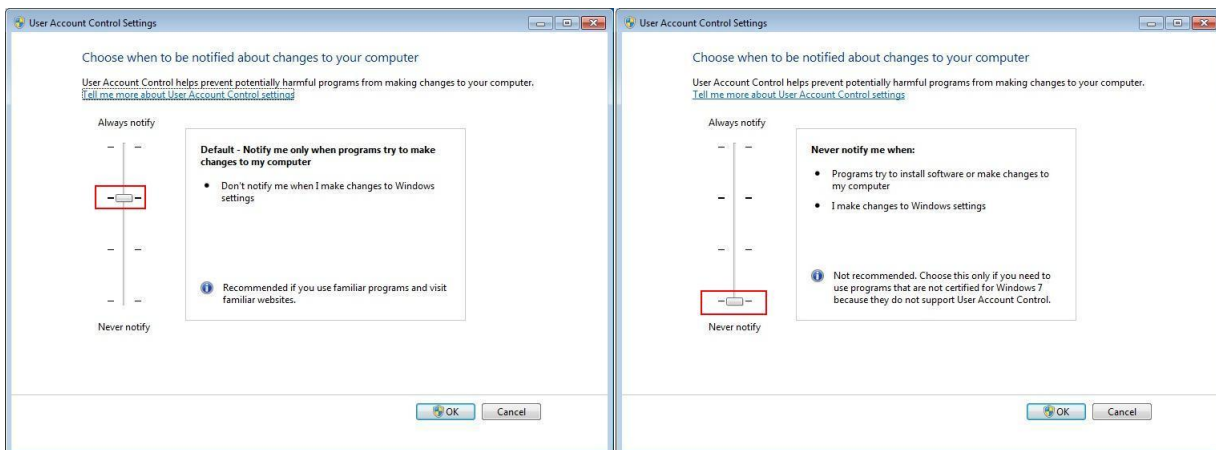
1. Open **Control Panel** and click **System and Security**



2. In **Action Center**, click **Change User Account Control settings**



3. Drag notification button down to **Never Notify**



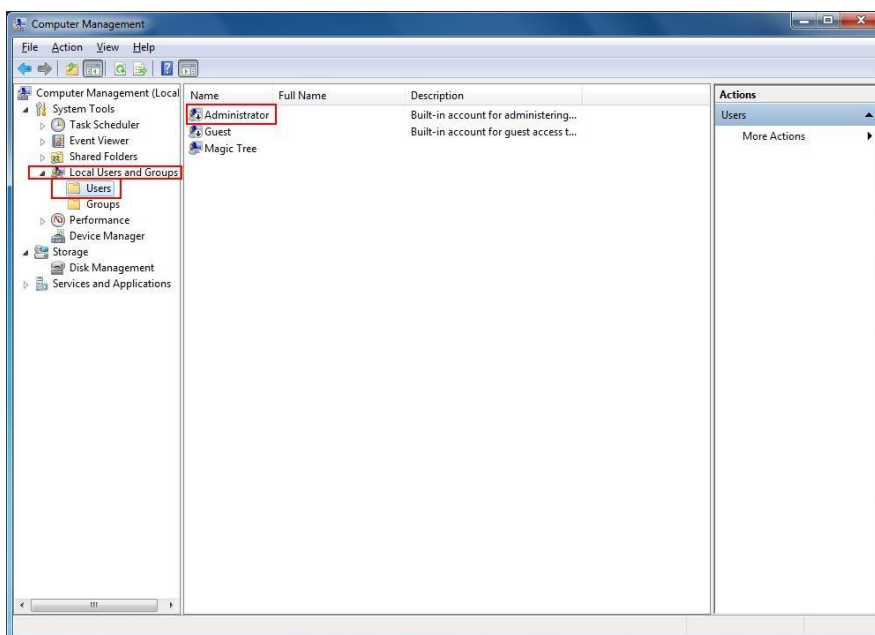
POWERLINK GM5 Wireless LAN 802.11b/g/n Ultra High Power USB Adapter

Steps for Enabling Windows built-in Administrator account

1. Right click **Computer** icon on desktop, from popup menu, select **Manage**.

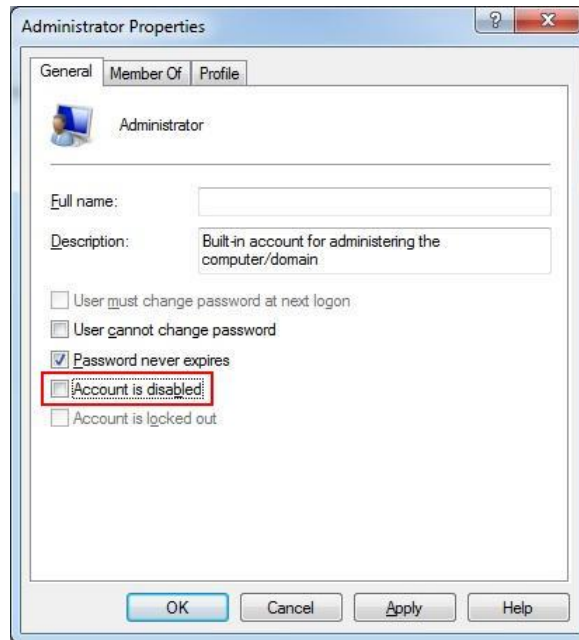


2. Expand the console tree on **Local Users and Groups**, click **Users**, and right click **Administrator** on action pane, and then click **Properties**

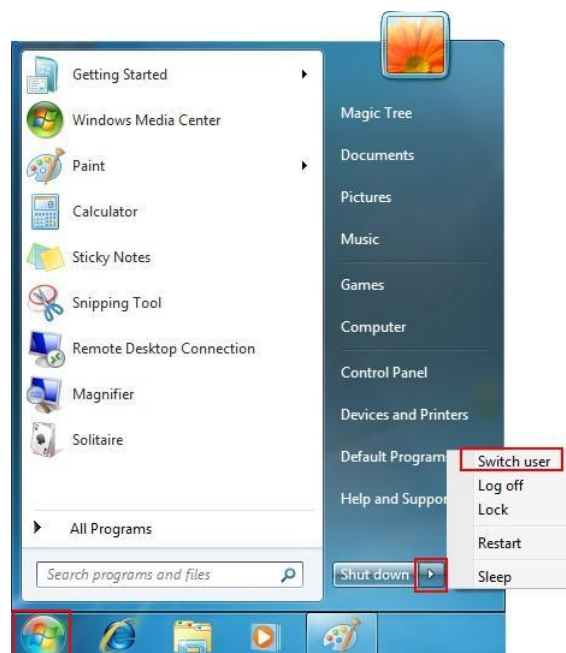


3. Uncheck **Account is disabled** and click **OK**

POWERLINK GM5 Wireless LAN 802.11b/g/n Ultra High Power USB Adapter

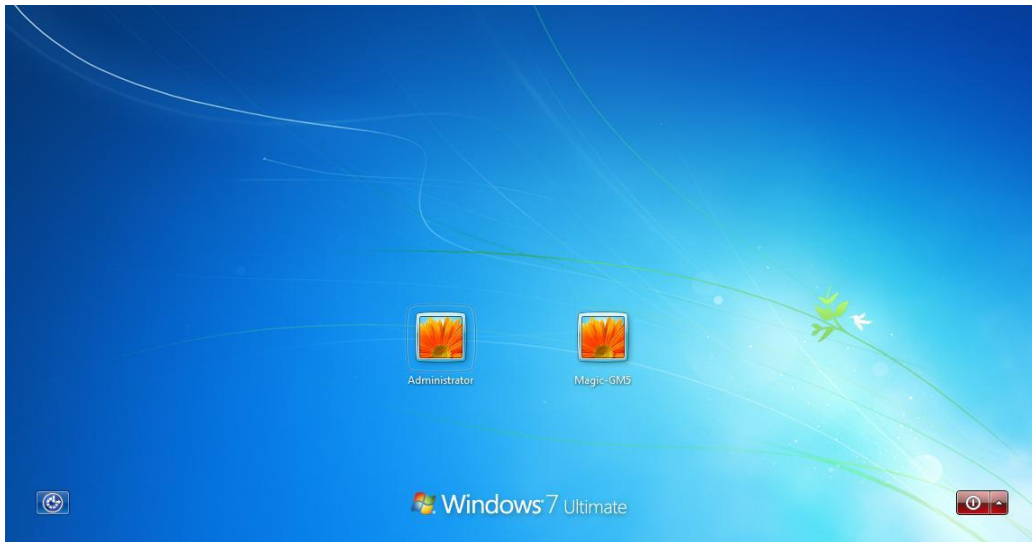


4. Click Start button and Select Switch user



POWERLINK GM5 Wireless LAN 802.11b/g/n Ultra High Power USB Adapter

5. Login Administrator account



Chapter 2 Installation and Uninstall

The installation consists of two parts. The first part is driver installation for the WLAN chipset inside **Give Me Five** WLAN adapter. The second part is **Give Me Five** utility.

Give Me Five utility installation will detect presence of **Give Me Five** WLAN adapter. It won't response to the installation if **Give Me Five** WLAN adapter does not plug into computer. Even though the main chip of your other brand adapter is just the same with Give-Me-Five wireless adapter.

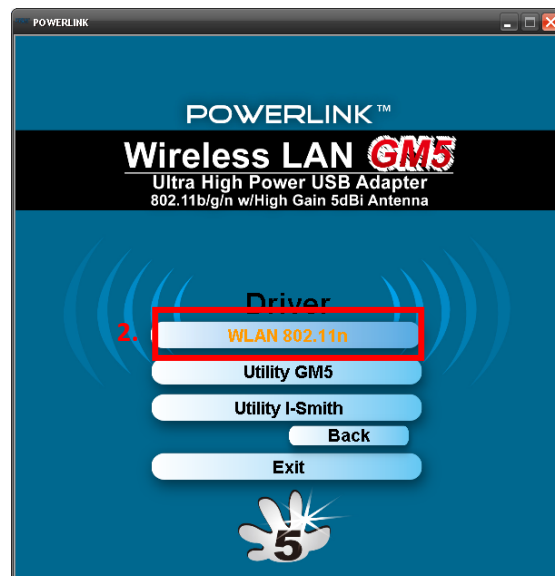
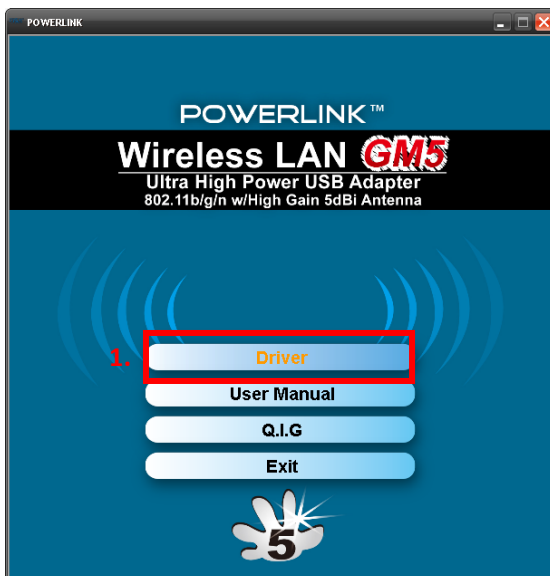
PART I – Install WLAN Adapter Driver

Install WLAN adapter Driver for Windows XP

1. If you insert the Wireless LAN USB Adaptor into your computer, the following hardware setup wizard will pop up if you have never installed driver for Ralink RT3070. Click **Cancel** to cancel installation from Windows.



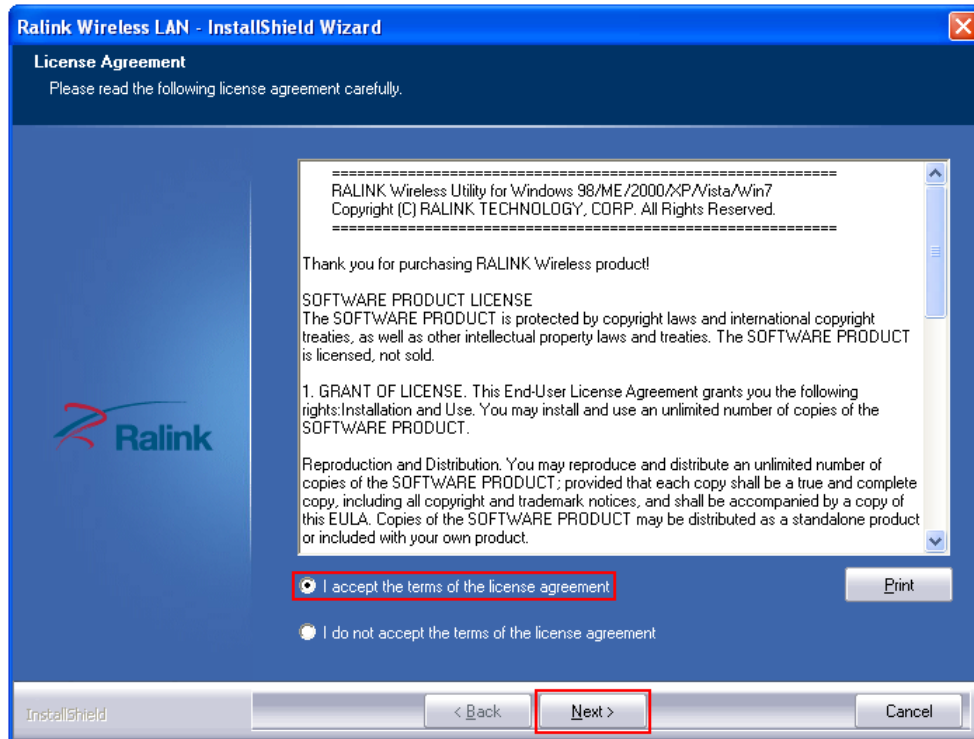
2. Insert your installation CD into CD-ROM drive of your computer. An installation page will pop up for you to install. Click **WLAN 802.11n**.



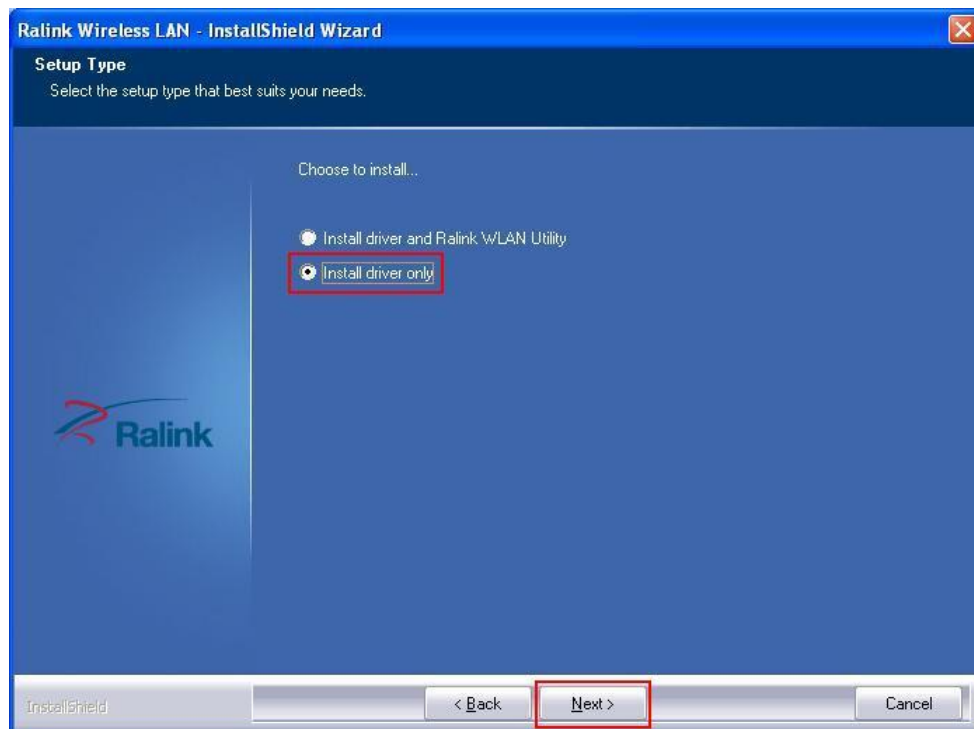
POWERLINK GM5 Wireless LAN 802.11b/g/n Ultra High Power USB Adapter

If the installation page does not appear, double click CD-ROM drive the installation CD was inserted to, or open the CD-ROM drive then click **Autorun.exe**

3. Click checkbox to accept the terms of license agreement, then click **Next**

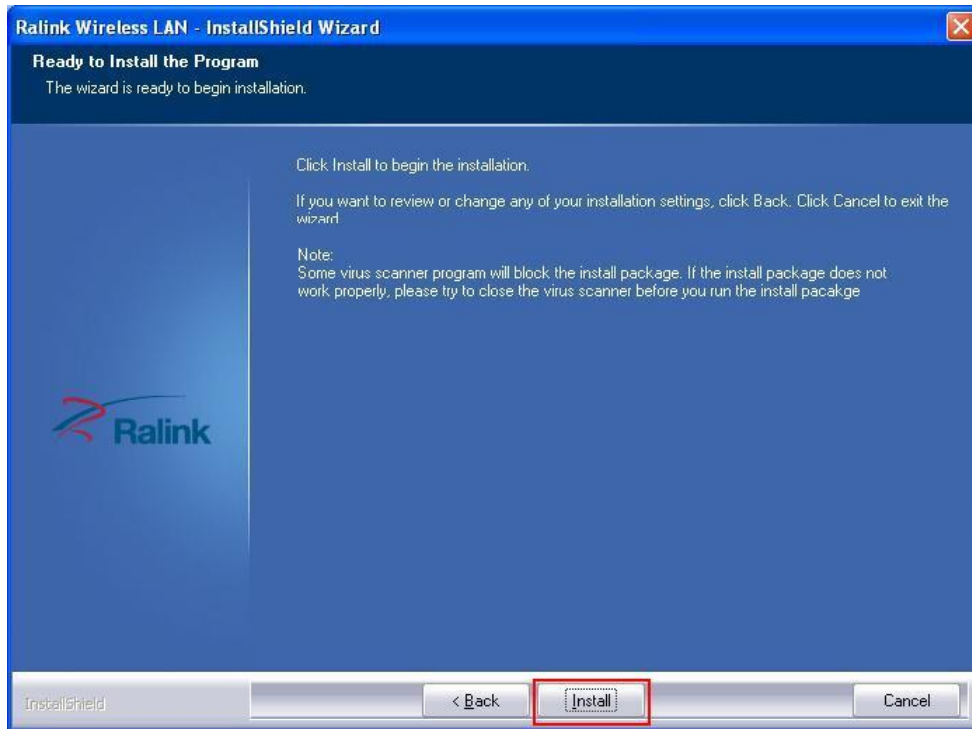


4. Select setup type for **Install driver only**, then click **Next**

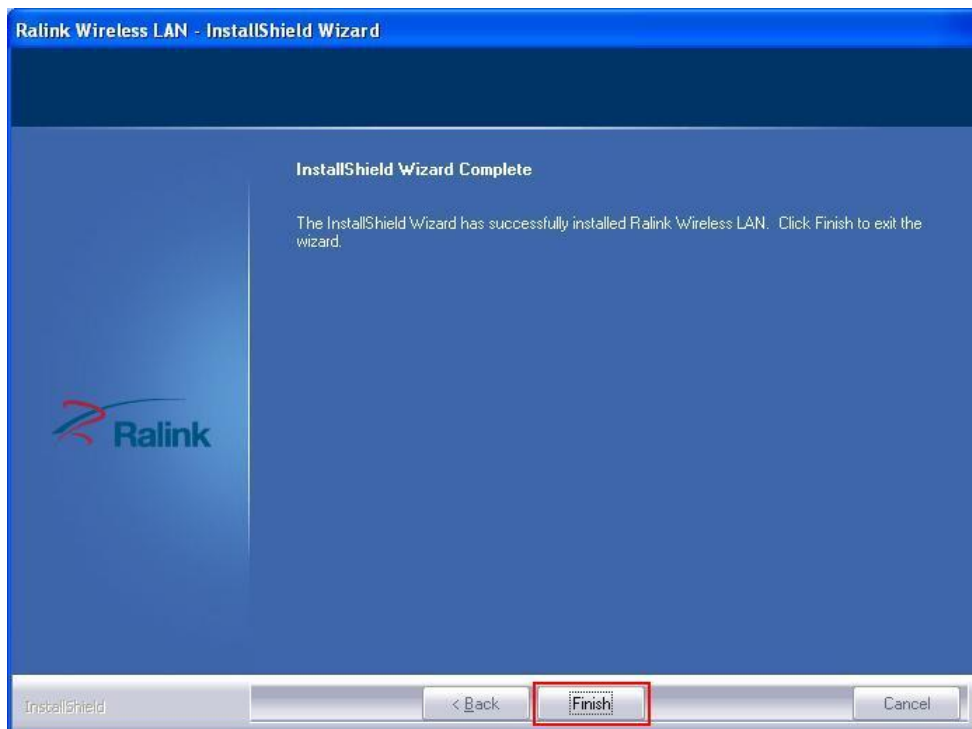


POWERLINK GM5 Wireless LAN 802.11b/g/n Ultra High Power USB Adapter

5. Click **Install** to continue driver installation



6. Click **Finish** to complete the driver installation.



POWERLINK GM5 Wireless LAN 802.11b/g/n Ultra High Power USB Adapter

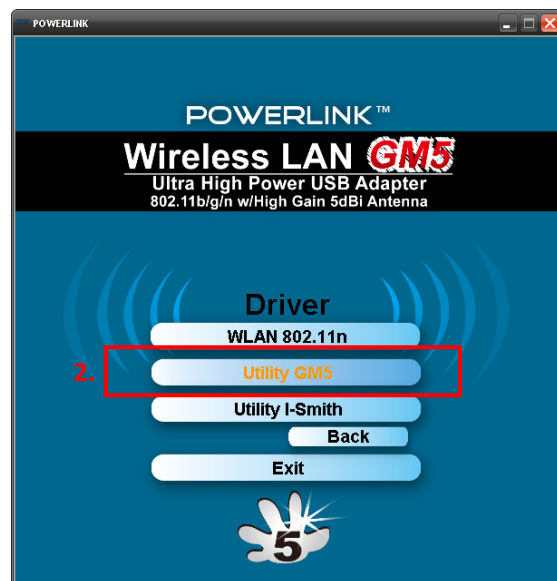
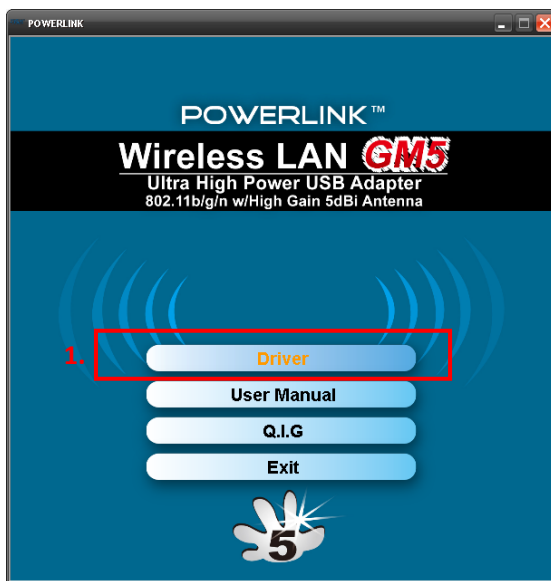
Install WLAN adapter Driver for Windows 7

The Give-Me-Five wireless adapter might be recognized by Windows 7 and automatically install Windows native driver after adapter plug into USB interface. It is fine to work with Windows native driver without problems. If your Windows 7 did not detect the presence of Give-Me-Five wireless adapter, the installation steps are similar to the steps for installing in Windows XP, just insert the installation CD into your CD-ROM drive and follow the steps describe in previous section.

PART II - Install **Give Me Five** utility

Install **Give Me Five** utility for Windows XP

1. Click on GM5 Utility

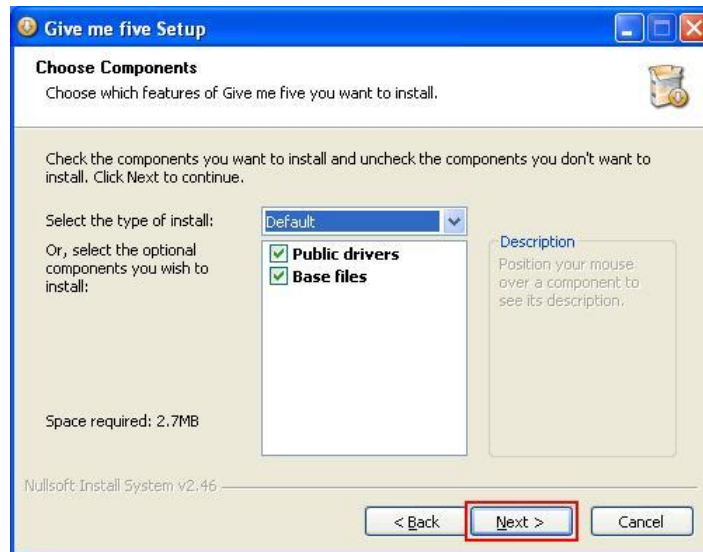


2. Click Next to start **Give Me Five** installation.

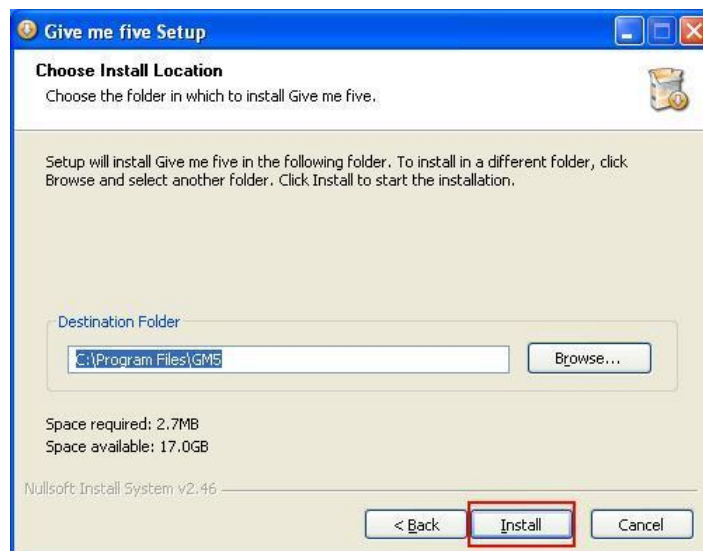


POWERLINK GM5 Wireless LAN 802.11b/g/n Ultra High Power USB Adapter

- Choose components to be installed then click **Next**. Recommend installing all components by default.



- Choose install location by click **Browse** button, change destination folder if needed, and then click **Install**.



- Select **Reboot now** then click **Finish** to restart your computer.

POWERLINK GM5 Wireless LAN 802.11b/g/n Ultra High Power USB Adapter



Install **Give Me Five** utility for Windows 7

Installation of **Give Me Five** utility for Windows 7 users is similar to steps as in Windows XP.

Note

*If you are Windows 7 professional and Ultimate users, please login the **Administrator** account to install **Give Me Five**.*

*After complete the installation and restart your computer, please login the **Administrator** account to get the highest permission for accessing **Give Me Five**.*

Uninstall Give-Me-Five Utility

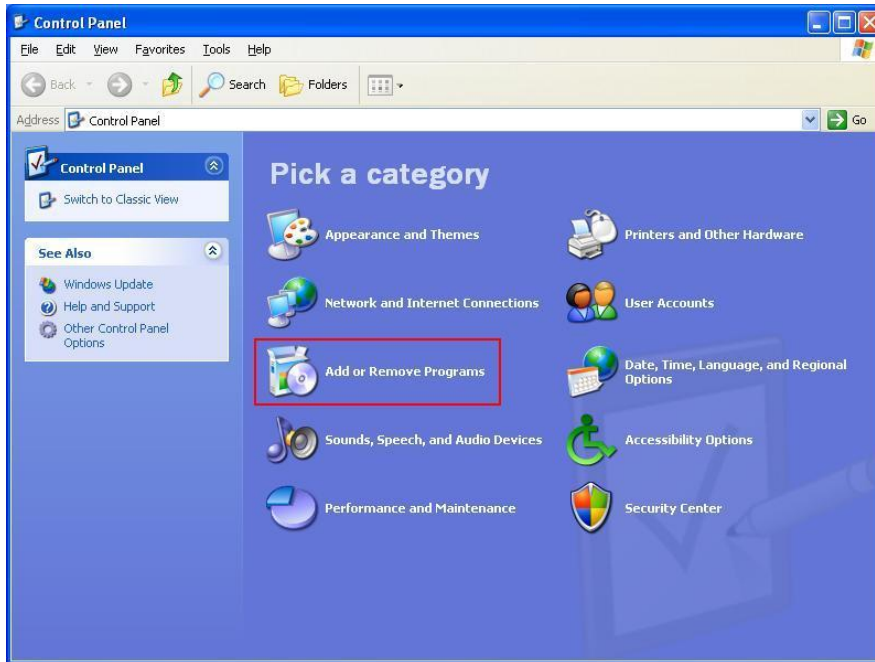
The uninstall procedure is a reference for users as the steps prior to update a newer version of **Give Me Five** utility.

1. Uninstall **Give Me Five** utility from **Start menu**, and then click **Control Panel**.

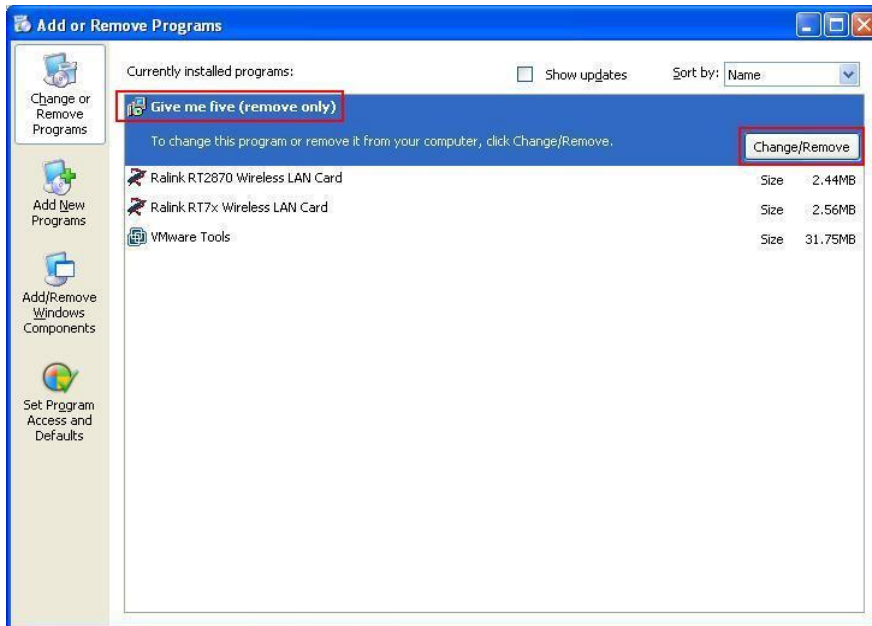


POWERLINK GM5 Wireless LAN 802.11b/g/n Ultra High Power USB Adapter

2. Click **Add or Remove Programs** from categories.

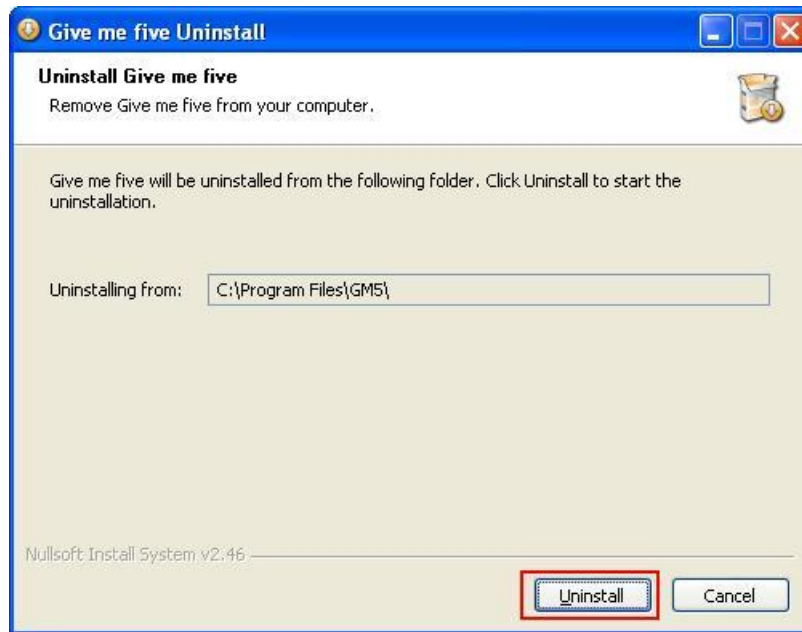


3. Select **Give Me Five (remove only)**, and then click **Change/Remove** button.



POWERLINK GM5 Wireless LAN 802.11b/g/n Ultra High Power USB Adapter

- Click **Uninstall** to remove **Give Me Five** utility from system.



- Select **Reboot now** and then click **Finish** to restart computer.



Chapter 3 Give Me Five User Guide

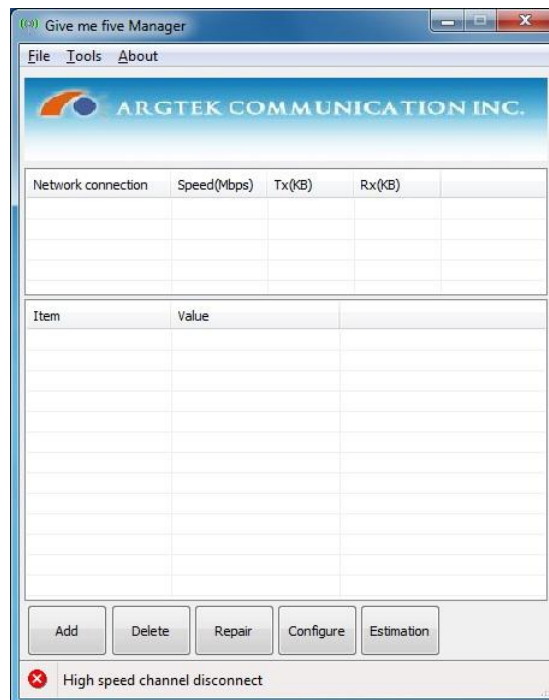
Quick Start

Following the steps in previous chapter, we have installed driver for network adapter and **Give Me Five** utility. The following steps will guide you how to setup a connections and combine bandwidth for your connections;

1. Connect to multiple internet connections one at a time by connect wireless adapters (including or excluding **Give Me Five**) to APs



2. Open **Give Me Five** utility by clicking  on desktop. The utility pop up.

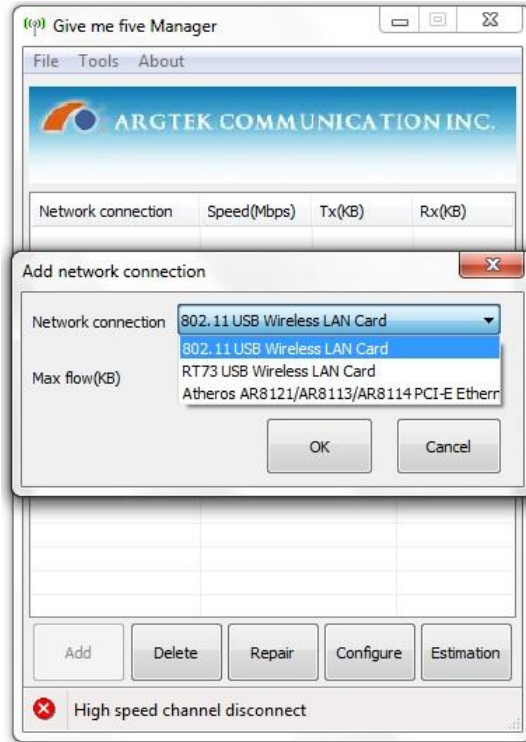


POWERLINK GM5 Wireless LAN 802.11b/g/n Ultra High Power USB Adapter

Note

Once you opened **Give Me Five**, the utility will take over the control of NIC. The connection status of NICs will soon turn into **Limited access**. Just continue your steps. Don't try to go back to re-connect your NICs.

3. Click **Add** button one at a time to add available connections from pull down menu.

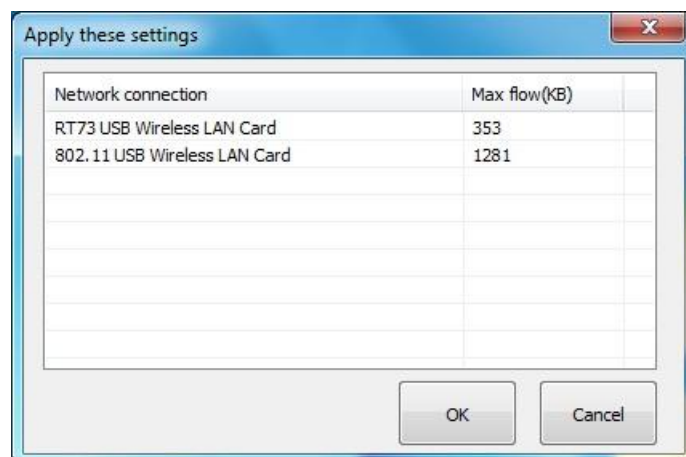


4. After adding all of the available connections, click **Estimation** button and waiting estimation results.



POWERLINK GM5 Wireless LAN 802.11b/g/n Ultra High Power USB Adapter

- Click **OK** to apply settings from estimation results.



- Browse internet and enjoy your incredible download speed.

Function Description



- Menu Bar
Contains 3 categories of instructions, **File**, **Tools** and **About**
- Logo Pane
ARGtek Communication INC. logo
- Connections Pane
The list of connections to be combined by **Give Me Five**
- Properties Pane
Properties of the connections which listed on **Connections Pane**
- Action Bar
Actions/Instructions for **Give Me Five**

POWERLINK GM5 Wireless LAN 802.11b/g/n Ultra High Power USB Adapter

⑥. Status Bar Status of the presence of high speed download manager

File Menu

Estimation The Location (URL) the file of trial downloads for bandwidth estimation.

Port mapping configure Make the configurations to mapping port and protocol to assigned connections

Exit Quit from **Give Me Five**

Tools Menu

Stay on top Active Window stays on top.

About Menu

About A popup windows containing version information of **Give Me Five**.

Connections Pane

Network Connection The name of the wired or wireless NIC (network interface card). Each connection has a symbol in front of the connection name. The yellow bulb sign represents a healthy connection and a red bulb sign represent disconnected. A magnifier sign represent the utility is inquiring the connection status from system.

Speed (Mbps) The capability of the PHY speed of the wired or wireless NIC in Mbps.

Tx (KB) The transmitting speed of the wired or wireless NIC in Kbyte.

Rx (KB) The receiving speed of the wired or wireless NIC in Kbyte.

Properties Pane

IP The IP address which DHCP server has assigned.

IP mask Subnet mask

Gateway IP address of **Default gateway**

DNS IP address of Domain name server

MACID MAC address of the wired or wireless NIC.

Max flow (KB) Maximum bandwidth of the connection

Action Bar

Add Add connections to the list for **Give Me Five** to combine.

Delete Delete connections from the list

Repair Diagnostic and repair for the internet connections

Configure Make the configurations of port and protocol to map to assigned connections

POWERLINK GM5 Wireless LAN 802.11b/g/n Ultra High Power USB Adapter

Estimation

Click to make trial download to estimate the bandwidth of the internet connections.

Status Bar

The statuses the presence of high speed download manager.